

Short Report



egapark Erfurt | ©Steve Bauerschmidt | egapark Erfurt

egapark Erfurt

Gothaer Straße 38
99094 Erfurt

Tel: +49 361 5643737
Fax: +49 361 5643722

info@egapark-erfurt.de
www.egapark-erfurt.de

Welcome!

The egapark Erfurt is the most important garden monument of the 1960s and one of the most beautiful parks in Germany. Throughout the changing seasons, the park bursts into bloom across expansive flowerbeds, in 20 unique themed gardens, and on Europe's largest ornamental flowerbed, covering 6,000 square meters. In addition to 120,000 plant varieties, other attractions of the egapark include Thuringia's largest playground, Erfurt's highest viewpoint, and the award-winning exhibition at the German Horticultural Museum. A desert and primeval forest experience, unique in Germany, awaits you in the Danakil area. The egapark offers a break from everyday life for all generations.

TEST RESULT

for

egapark Erfurt

99094 Erfurt, Certificate-ID: PA-02279-2025



This offer was classified according to
the criteria of the nationwide label

»Tourism for All«

and, in the period from

January 2026 – December 2028

is entitled to use the label

»Accessibility checked«

and the associated pictograms
in accordance with the contract.



egapark Erfurt

©Steve Bauerschmidt |
egapark Erfurt



egapark Erfurt

©Steve Bauerschmidt |
egapark Erfurt



egapark Erfurt

©Steve Bauerschmidt |
egapark Erfurt

Overview

- Parking spaces directly opposite the main entrance or above the exhibition grounds (2 stops by streetcar)
- egapark stop for low-floor streetcars – streetcar line 2
- Largest garden and largest playground in Thuringia
- As a site of BUGA 2021 extensively restored, rebuilt, expanded
- A highlight: DANAKIL – combination of desert and jungle house with multimedia accompaniment
- Nature in the middle of the city – popular excursion destination for Erfurt residents and their guests

Accessibility at a glance

- Parking space for people with disabilities.
- The terrain is steplessly accessible(via elevator)
- All rooms and facilities available to the guests are steplessly accessible (via ramp).
- All passageways/doors are at least 90 cm wide.
- There is at least one toilet designed for people with disabilities.
- Assistance dogs are allowed inrelevant areas/rooms.
- Rollators, wheelchair, transfer wheelchair, handcart available for loan.
- Guided tours for people with disabilities are offered.

Information for people with walking difficulties and wheelchair users

All areas relevant for testing meet the quality criteria of the label "**Accessibility certified – partially accessible for people with walking disabilities**".

Some **information on accessibility** are listed below. For detailed information please see the evaluation report.

- There are 12 marked parking spaces for people with disabilities.
- The egapark stop on line 2 is nearby.
- The park is accessible via a ramp or a lift with no steps.
- Almost all paths and facilities that can be used by visitors are accessible without steps or via ramps (except for the observation tower, which is only accessible via steps).
- The ramps have a maximum gradient of 5% and a maximum total length of 12 metres. Exception: the ramp to Hall 1 has a maximum gradient of 11% over 7 metres.
- All doors/passages accessible to visitors are at least 80 cm wide.
- Outdoor paths are at least 150 cm wide and easy to walk and drive on.
- Seating is available.
- The exhibits/objects and their information are mainly visible when seated.
- Wheelchair-accessible tables are available in the catering areas.
- Guided tours are offered for people with walking disabilities and wheelchair users. Advance booking is required.
- The entire route of the guided tour is accessible to wheelchair users without steps.
- Assistive devices available: walkers, wheelchairs, transfer wheelchairs, handcarts.
- There are numerous public toilets for people with disabilities.

Information for people with hearing impairments and deaf people

Some **information on accessibility** are listed below. For detailed information please see the evaluation report.

- There is no alarm.
- There is an inductive hearing system at the handicapped accessible ticket office.
- The information on the exhibits/stations/objects is provided in writing.
- In the the gastronomy areas there are tables with bright and glare-free lighting, on which there are no lamps standing or hanging that interfere with the field of vision or eye contact.

- There is seating area with low background noises (e.g. corner seating, separate room).
- Guided tours are offered for people with hearing impairment, but not for deaf people.

Information for visually impaired and blind people

All areas relevant for testing meet the quality criteria of the label "**Accessibility certified – partially accessible for people with visual impairments**".

Some **information on accessibility** are listed below. For detailed information please see the evaluation report.

- Assistance dogs are welcome.
- External paths tactilely detectable sidewalk boundaries.
- External paths usually do have visually contrasting sidewalk boundaries.
- The entrance is visually rich in contrast, but not recognizable by a tactile change of floor covering.
- There are no visually contrasting or tactilely detectable floor indicators available.
- The signage is designed in clearly legible and contrasting font.
- There are no obstacles, e.g. objects protruding into the path/room.
- There are no revolving or rotating doors.
- Steps are not visually rich in contrast.
- Stairs have mostly handrails on both sides.
- The exhibits/stations/objects are usually well illuminated.
- The information on the exhibits/stations/objects is provided in writing and is mostly visually rich in contrast.
- The menu font Rundbau – Café Restaurant is straightforward and visually rich in contrast. There is no menu available in large print.
- Information is not available in raised print or Braille.
- Guided tours are offered for people with visual impairments, but not for blind people. A reservation in advance is necessary.

Information for guests with cognitive impairments

Some **information on accessibility** are listed below. For detailed information please see the evaluation report.

- The name of the facility is clearly recognizable from the outside.
- Signs in visible distance or an uninterrupted guidance system are available.
- There is no colored or pictorial guidance system available.
- The information on the exhibits is provided in writing, but not in easy language.
- There are no menu with pictures available and the dishes are not visibly presented (buffet, bar).
- Guided tours for people with cognitive impairments are offered. A reservation in advance is necessary.
- The guided tour for people with cognitive impairments is given using easy language.

Comfort for all generations

We have compiled some **information on accessibility** below. Detailed information can be found in the test report.

- There are general parking spaces at the Erfurt Exhibition Centre.
- The egapark stop on line 2 is nearby.
- The park is accessible via a ramp or a lift with no steps.
- The name and logo of the park are clearly visible from the outside.
- The entrance is designed with high visual contrast.
- There is an inductive hearing system at the disabled-friendly ticket office.
- Almost all paths and facilities that can be used by guests are accessible without steps or via ramps (except for the observation tower, which is only accessible via steps).
- The ramps have a maximum gradient of 5% and a maximum total length of 12 m. Exception: the ramp to Hall 1 has a maximum gradient of 11% over 7 m.
- All doors/passages accessible to visitors are at least 80 cm wide.
- Outdoor paths are at least 150 cm wide and easy to walk and drive on.
- Most stairs have handrails on both sides.
- Seating is available.
- The exhibits/stations/objects are generally well lit. Information about the exhibits is mainly provided in writing. The signage is designed in an easily legible and high-contrast font. Multimedia accompaniment in the room: DANAKIL.
- The catering areas have tables with bright, glare-free lighting. There are seating areas with low ambient noise (e.g. seating area, separate room).
- The menu in the Rundbau café and restaurant is written in simple, high-contrast font.
- There are signposts at visible intervals or an uninterrupted guidance system.
- Guided tours are offered for people with walking, hearing and visual impairments. Advance booking is required. The entire route of the tour is accessible without steps.
- Assistive devices available: walking frames, wheelchairs, transfer wheelchairs, handcarts.

- There are numerous public toilets.

Image Gallery

We have put together some photos from the company / offer for you. You can find more photos in the detailed reports.



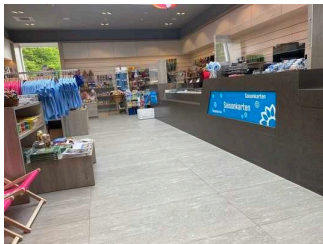
Car park

©Sylvia Engel



Entrance

©René Strobach



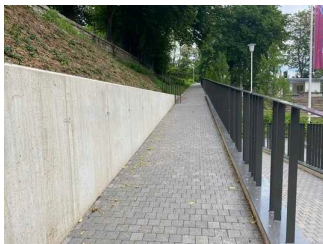
Cash desk in the store and visitor service

©René Strobach



South entrance with automatic pay station and turnstile and entrance door

©René Strobach



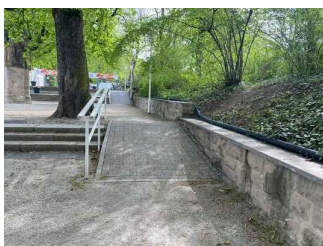
Short and long ramp runs from the south entrance

©René Strobach



Entrance Gothaer Platz with cash desk

©René Strobach



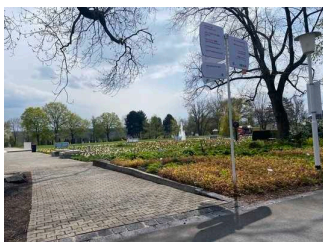
Stairs and ramp from Gothaer Platz entrance

©René Strobach



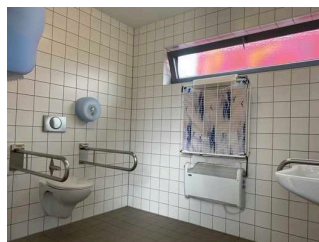
Main path in egapark and large flower bed

©René Strobach



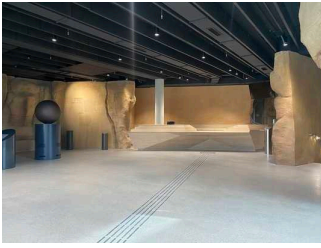
Main and side paths in egapark with signposts

©René Strobach



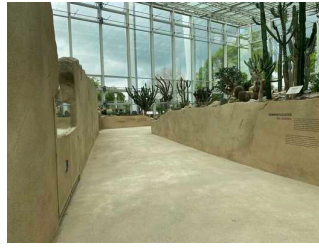
Toilet on the main path next to hall 1

©René Strobach



DANAKIL foyer with guidance system to cash desk and lounge

©René Strobach



DANAKIL with paths through the desert

©René Strobach



DANAKIL with listening stations in the desert

©Sylvia Engel



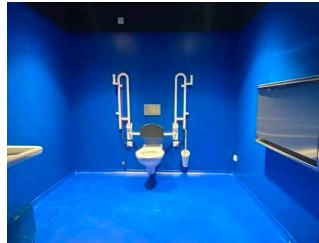
DANAKIL with path to the tropics and information drawers

©René Strobach



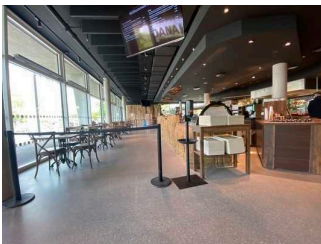
DANAKIL

©René Strobach



DANAKIL with toilet in the basement

©Sylvia Engel



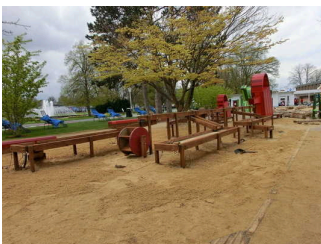
DANAKIL restaurant with self-service – indoor seating

©René Strobach



Gastronomy in the egapark

©Sylvia Engel



Different playgrounds – water playground, climbing and balancing, digging in the sand and swinging

©René Strobach

Information on the "Tourism for All" labeling system

All establishments and locations certified with the label "Tourism for All" meet the following quality criteria:

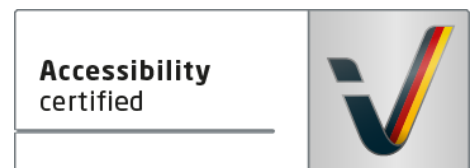
- Data and information on accessibility are collected and checked on site by **external, specially trained evaluators**. The method is not based on self-assessments.
- Data on accessibility is available **in detail** and can be viewed by the guests.
- At least one staff member has successfully passed a **training** on "**Accessibility as a comfort and quality feature**".

The labeling – explanation of the logos and pictograms

The label "**Information about Accessibility**" indicates that detailed and verified information on accessibility is available for all groups of people.



The label "**Accessibility certified**" is based on "Information about Accessibility". It means that the quality criteria defined for specific groups of people are met partially or completely.



The label "**Accessibility certified**" is available in two requirement levels:

"Accessibility certified: partially accessible".

The quality criteria are partially fulfilled for the pictured group of people, i.e. the establishment/location is partially accessible for wheelchair users. The "i" in the pictogram indicates that it is recommended to read again carefully whether the offer meets all (your oder the guest's) individual requirements.



"Accessibility certified: accessible".

The quality criteria are fulfilled for the pictured group of people, i.e. the establishment/location is accessible for wheelchair users.



There are defined quality criteria for **seven groups of people** and a **specific pictogram** for each group.

People with walking disabilities



Wheelchair users



People with hearing impairment



Deaf people



People with visual impairments



Blind people



People with cognitive impairments

