

Short Report



Restaurant Zum Rebstock in the Hotel Mercure Erfurt Altstadt | ©GLAM photo+design

Restaurant Zum Rebstock in the Hotel Mercure Erfurt Altstadt

Meienbergstraße 26/27
99084 Erfurt

Tel: +49 361 5949518
Fax: +49 361 5949100

kontakt@restaurant-zum-rebstock.de
www.restaurant-zum-rebstock.de

Provider: AccorInvest Germany GmbH c/o Mercure Hotel Erfurt Altstadt

Meienbergstraße 26-27
99084 Erfurt

Tel: +49 361 59490

H5375@ACCOR.COM

Welcome!

Your restaurant in the middle of the historic city center of Erfurt.

Built in 1451, the "Haus zum Rebstock" houses today's "Restaurant zum Rebstock". You will find it in the Futterstraße in the middle of the historic old town of Erfurt. Here you can relax and enjoy in a pleasantly informal and rustic atmosphere. The kitchen offers among other things real Thuringian specialties.

Three cozy guest rooms offer space for a total of 60 guests. In summer, our "green" indoor terrace is a popular place to be.

For celebrations there is a separate room, which offers space for up to 20 people at a large table, in a historical ambience.

TEST RESULT

for

Restaurant Zum Rebstock im Hotel Mercure Erfurt Altstadt

99084 Erfurt, Certificate-ID: PA-02276-2022



This offer was classified according to
the criteria of the nationwide label

»Tourism for All«

and, in the period from

October 2022 – September 2025

is entitled to use the label

»Accessibility checked«

and the associated pictograms
in accordance with the contract.



Restaurant Zum
Rebstock in the
Hotel Mercure Erfurt
Altstadt

©GLAM photo+design

Overview

- In the middle of downtown Erfurt
- Restaurant in a historic building from 1451
- Menu with real Thuringian specialties
- Parking available at the Hotel Mercure Erfurt–Altstadt or in the Anger 1 parking garage (approx. 200 m)
- Public transport: Anger stop (approx. 300 m – all streetcar lines)

Accessibility at a glance

- Parking for people with disabilities in the courtyard and in the underground car park.
- The restaurant is accessible without steps via the hotel entrance and via the entrance from the courtyard
- All rooms usable by guests are accessible without steps or via a lift
- 90 cm minimum width of all passages/doors
- WC for people with disabilities in the basement
- Assistance dogs welcome

Information for people with walking difficulties and wheelchair users

All areas relevant for testing meet the quality criteria of the label "**Accessibility certified – partially accessible for people with walking disabilities**". Some **information on accessibility** are listed below. For detailed information please see the evaluation report.

- There is one marked parking space for people with disabilities in the yard (parking space size: 280 cm x 500 cm). There are two marked parking spaces for people with disabilities in the underground parking area (parking space size: 450 cm x 510 cm).
- The path from the courtyard car park to the hotel entrance is 10 m long.
- The restaurant is accessible without steps via the hotel entrance on Maienbergstr. as well as via the entrance from the courtyard.
- The restaurant is accessible without steps.
- All evaluated rooms and facilities available to the guests are steplessly accessible at ground level or via an elevator.
Exception: the Séparée in the restaurant is only accessible via three steps.
- The elevator cabin measures 110 cm x 93 cm. The elevator door is 80 cm wide.
- All evaluated passageways / doors available to the guests are at least 90 cm wide.
- There are wheelchair accessible tables in the restaurant (maximum height 80 cm, wheelchair accessible at a height of 67 cm and a depth of 30 cm).

Public toilet for people with disabilities (basement)

- The maneuvering spaces are:
in front of / behind the door at least 200 cm x 106 cm;
in front of the toilet 118 cm x 90 cm;
in front of the washbasin 118 cm x 114 cm;
left of the toilet 98 cm x 56 cm, no maneuvering space on the right.
- There is a handle on the right side of the toilet. The handle cannot be folded up.
- The washbasin has limited wheelchair access.
- The mirror cannot be seen while sitting.
- An alarm trigger (cord, button) is not present.

Information for people with hearing impairments and deaf people

Some **information on accessibility** are listed below. For detailed information please see the evaluation report.

- There is no clearly visible alarm.
- There is no audio induction loop.
- An outgoing emergency call in the elevator is confirmed audibly.
- Alternatively stairs are available.
- In the restaurant there are tables with bright and glare-free lighting, on which there are no lamps standing or hanging that restrict the field of vision or eye contact.
- There is a seating area with low background noises (e.g. seating corner, separate room).

Information for visually impaired and blind people

Some **information on accessibility** are listed below. For detailed information please see the evaluation report.

- Assistance dogs are allowed in relevant areas / rooms.
- Outdoor paths usually have visually contrasting or tactilely detectable walkway boundaries.
- The entrances (hotel and restaurant) are visually rich in contrast and recognizable by a tactile change of floor covering.
- Almost all evaluated areas usable by the guest are well illuminated, i.e. bright and glare-free.
- There are no visually contrasting or tactilely detectable floor indicators.
- The signage is designed in clearly legible and contrasting font.
- There are no revolving or rotating doors.
- Glass doors are not marked with safety markings.
- An outgoing emergency call in the elevator is confirmed audibly. The stopping position is not announced by spoken commands. The controls are not visually contrasting, but tactile.
- Alternatively stairs are available.
- At least at the first and last step, stairs have visually contrasting edges
- Stairs have at least a handrail on one side.
- The menu font is straightforward and visually rich in contrast.
- There is no menu in large print or Braille.
- Aids offered: reading aids (reading glasses, magnifying glasses, etc.)

Information for guests with cognitive impairments

Some **information on accessibility** are listed below. For detailed information please see the evaluation report.

- The name or logo of the restaurant is clearly recognizable from the outside.
- The objectives of the paths are always within sight or signs in visible distance are available
- There are signs at a visible distance or an uninterrupted guidance system.
- There is no colored or pictorial guidance system.
- There is no menu with pictures and the dishes are not visibly presented (buffet, bar).
- Information is not displayed with pictograms or pictures.

Information for allergy sufferers and people with food intolerances

We have compiled some **information for allergy sufferers** below. Detailed information can be found in the test report.

Food intolerances

- Information available for allergy sufferers and guests with special dietary requirements (e.g. restaurants, health food stores).
- Information on the ingredients of the foods used (also available on request).
- Flavor enhancer free, main allergen free. lactose free and vegetarian food: at least 1 dish on the menu.
- Gluten-free, fructose-free and vegan food: on request.

Comfort for all generations

We have compiled some **information on accessibility** below. Detailed information can be found in the test report.

- There is general parking in an underground garage.
- The name or logo of the restaurant are clearly recognizable from the outside.
- The entrances (hotel and restaurant) are visually contrasting.

- The restaurant is accessible without steps via the hotel entrance at Maienbergstr. as well as via the entrance from the courtyard.
- Almost all rooms and facilities that can be used by guests and are elevated are accessible at ground level or via an elevator. Exception: the séparée in the restaurant is only accessible via three steps.
- The elevator cabin is 110 cm x 93 cm.
- Almost all doors/passages that can be used by guests and are elevated are at least 90 cm wide. Exception: the elevator door is 80 cm wide.
- Almost all raised and usable areas for the guest are well lit, i.e. bright and glare-free.
- There is no visually clearly perceptible alarm.
- An outgoing emergency call in the elevator is confirmed acoustically. Alternatively, stairs are provided. Stairs have visually contrasting edges at least on the first and last steps. Stairs have at least one handrail on one side.
- Signage is designed in legible, high-contrast lettering.
- There are glass doors without safety markings
- There are tables in the restaurant with bright, glare-free lighting. There is a seating area with low ambient noise (e.g., seating area, separate room).
- The font of the menu is designed in unadorned and high-contrast font.
- Possibility to compose meals individually according to the quantity needed.
- Snacks also available outside the scheduled meal times.

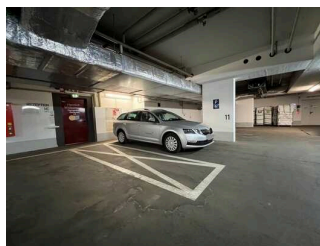
Image Gallery

We have put together some photos from the company / offer for you. You can find more photos in the detailed reports.



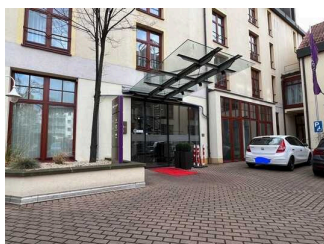
Parking lot in the yard

©René Strobach



Underground garage

©René Strobach



Entrance

©René Strobach



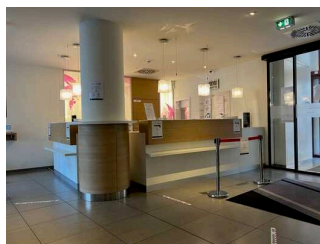
Entrance
Meienbergstraße

©René Strobach



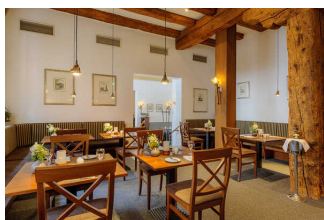
Entrance Restaurant
"Zum Rebstock"

©René Strobach



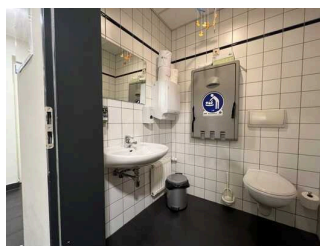
Reception

©René Strobach



Dining room /
Restaurant

GLAM photo+design



Public toilet

©René Strobach

Information on the "Tourism for All" labeling system

All establishments and locations certified with the label "Tourism for All" meet the following quality criteria:

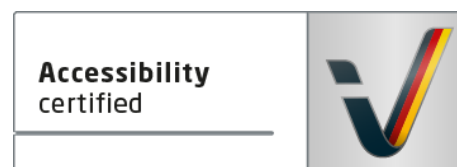
- Data and information on accessibility are collected and checked on site by **external, specially trained evaluators**. The method is not based on self-assessments.
- Data on accessibility is available **in detail** and can be viewed by the guests.
- At least one staff member has successfully passed a **training** on "**Accessibility as a comfort and quality feature**".

The labeling – explanation of the logos and pictograms

The label "**Information about Accessibility**" indicates that detailed and verified information on accessibility is available for all groups of people.



The label "**Accessibility certified**" is based on "Information about Accessibility". It means that the quality criteria defined for specific groups of people are met partially or completely.



The label "**Accessibility certified**" is available in two requirement levels:

"Accessibility certified: partially accessible".

The quality criteria are partially fulfilled for the pictured group of people, i.e. the establishment/location is partially accessible for wheelchair users. The "i" in the pictogram indicates that it is recommended to read again carefully whether the offer meets all (your oder the guest's) individual requirements.



"Accessibility certified: accessible".

The quality criteria are fulfilled for the pictured group of people, i.e. the establishment/location is accessible for wheelchair users.



There are defined quality criteria for **seven groups of people** and a **specific pictogram** for each group.

People with walking disabilities



Wheelchair users



People with hearing impairment



Deaf people



People with visual impairments



Blind people



People with cognitive impairments

