

Short Report



DAS KEHRS – Hotel on the hill Petersberg | ©Uta Kehr

DAS KEHRS – Hotel auf dem Petersberg

Petersberg 18
99084 Erfurt

Tel: +49 361 6019600
Fax: +49 361 601960555

hotel@daskehrs.de
www.hotel-daskehrs.de

Provider: Das Kehrs Hotel Petersberg GbR

Petersberg 18
99084 Erfurt

hotel@daskehrs.de

Welcome!

The hotel was opened in June 2021. It is family-run and has 38 rooms, including 2 large suites in the roof area and 3 appartements. One room is designed barrier-free. A meeting room, sauna and fitness area were created. The house is quietly situated in the middle of a baroque fortress from the 17th century. Here the guest resides between fortress buildings and well-kept green areas in a quiet but central location with a few over the northeastern part of Erfurt-city. The public restaurant “PEBERG” belongs to the hotel.

TEST RESULT

for

DAS KEHRS – Hotel auf dem Petersberg

99084 Erfurt, Certificate-ID: PA-12961-2022



This offer was classified according to
the criteria of the nationwide label

»Tourism for All«

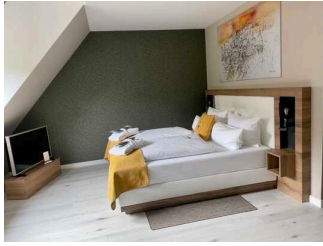
and, in the period from

March 2023 – February 2026

is entitled to use the label

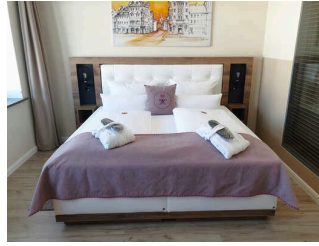
»Accessibility checked«

and the associated pictograms
in accordance with the contract.



DAS KEHRS – room
301

©Uta Kehr



DAS KEHRS – room
208

©Anke Riese

Overview

- Family run hotel – nestled in 12ha of green space – framed and protected by the well-preserved fortifications high above Erfurt's Old Town.
- 38 rooms and suites as well as 3 apartments
- Restaurant PEBERG with upscale cuisine
- Wellness area with fitness room and sauna
- Public transport stop "Andreasstraße" – streetcar lines 3 and 6

Accessibility at a glance

- Parking space for people with disabilities
- A barrier-free designed room
- Building accessible without steps
- All rooms and facilities that can be used by guests and are elevated are accessible without steps or via an elevator
- 90 cm minimum width of all passages/doors (except in the wellness room)
- WC for people with disabilities
- Threshold-free shower
- Shower chair or seat available
- Assistance dogs welcome

Information for people with walking difficulties and wheelchair users

All areas relevant for testing meet the quality criteria of the label "**Accessibility certified – partially accessible for people with walking disabilities**".

Some **information on accessibility** are listed below. For detailed information please see the evaluation report.

- There is a marked parking lot for people with disabilities (parking space size: 395 cm x 400 cm).
- Between the parking lot and the entrance the path is 30 m. It isn't easy to walk and drive on and has a maximum longitudinal slope of 3% over a distance of 30 m.
- The streetcar stop "Webergasse/ Andreasstraße" is 400 m away.
- Access to the building is possible without steps via a lift. The platform is 106 cm wide and 200 cm deep.
- All rooms that can be used by guests and are elevated (except the wellness area) are accessible at ground level or by elevator.
- The elevator car is 106 cm x 143 cm.
- All passageways/doors are at least 90 cm wide (except for individual doors in the wellness area).
- The reception counter is 120 cm high. There is another, equivalent communication possibility in sitting.
- In the PEBERG restaurant there are wheelchair accessible tables (maximum height 80 cm, wheelchair accessibility at a height of 67 cm and a depth of 30 cm).

Room 301 (double room, designed to be barrier-free)

- The manoeuvring spaces are:
in front of essential furnishings (e.g. cabinets) 200 cm x 200 cm;
to the left of the bed 50 cm x 182 cm; to the right of the bed 200 cm x 182 cm.
- The bed is 54 cm high.
- The manoeuvring spaces in the bathroom are:
in front of the sink and in front of the WC 200 cm x 110 cm;
to the left of the WC 150 cm x 70 cm; to the right of the WC 72 cm x 70 cm.
- There is a flipped up grab rail to the right of the WC.
- The sink is wheelchair compatible.
- The mirror can be viewed while sitting or standing.
- The shower is accessible without steps and is 160 cm x 200 cm.
- There are grab rails in the shower. A shower seat is available or can be provided if needed (fixed, folding, hook-in or mobile and stable).
- There is an alarm release device available.

Room 208 (double room)

- The manoeuvring spaces are:
in front of essential furnishings (e.g. cabinets) 200 cm x 128 cm;
to the left of the bed 88 cm x 183 cm; to the right of the bed 57 cm x 183 cm.
- The bed is 55 cm high.
- The bathroom is not designed for people with disabilities (very small movement areas, no grab rails, etc.).

Public WC for people with disabilities (first floor).

- The manoeuvring spaces are:
in front of the sink and in front of the WC 180 cm x 122 cm;
to the left of the WC 114 cm x 46 cm; to the right of the WC 31 cm x 70 cm.
- There are grab rails to the left and right of the WC.
- The left grab rail is flipped up.
- The sink is wheelchair compatible.
- The mirror is visible in sitting and standing position.
- There is a cord as an alarm trigger.

Wellness

- The doors in the wellness area are at least 80 cm wide. Exception: the sauna door is only 68 cm wide.
- The shower is accessible without steps and is 194 cm x 156 cm. Grab rails are not available.
- A sauna wheelchair cannot be provided.

Information for people with hearing impairments and deaf people

Some **information on accessibility** are listed below. For detailed information please see the evaluation report.

- There is no clearly visible alarm.
- There is no audio induction loop.
- An outgoing emergency call in the elevator is confirmed audibly.
- In Restaurant PEBERG there are tables with bright and glare-free lighting, on which there are no lamps standing or hanging that restrict the field of vision or eye contact.
- In room 208 and 301 (double bedroom) there is at least one electrical outlet available near the bed.

- The ringing or knocking on the door is not indicated by a flashing signal which can be perceived in all rooms.
- WiFi is offered.

Information for visually impaired and blind people

Some **information on accessibility** are listed below. For detailed information please see the evaluation report.

- Assistance dogs may be brought into all relevant areas/rooms.
- The entrance is not visually contrasting.
- All raised areas that can be used by guests are well lit, i.e. bright and glare-free.
- There are no visually contrasting or tactile floor indicators.
- Signage is designed in legible, high-contrast lettering.
- An outgoing emergency call in the elevator is acknowledged acoustically. The stop position is announced by voice. The operating elements are not designed with high visual contrast, but are tactilely detectable (Braille).
- Stairs do not have visually contrasting edges on the first and last steps. Stairs have at least one handrail on one side.
- The font of the menu in the PEBERG restaurant is designed in a straightforward and high-contrast font.
- Information is not available in Braille or prismatic font.

Information for guests with cognitive impairments

Some **information on accessibility** are listed below. For detailed information please see the evaluation report.

- The name or logo of the hotel is not clearly recognizable from the outside.
- There is no color or pictorial guidance system.
- The food in the PEBERG restaurant is visibly presented (buffet, bar).
- There is no information in easy language.

Information for allergy sufferers and people with food intolerances

We have compiled some **information for allergy sufferers** below.

Animal hair

- No animals on the premises and its immediate surroundings.
- 3 pet-free rooms available.

Pollen

- Always up-to-date information about the seasonal course of the pollen flight in the region.

House dust

- Smooth floor in accessible areas, damp mopped daily.
- Allergen-proof protective covers (encasings) available for mattresses, comforters and pillows.
- Allergy-safe comforters and pillows without down available.

Food intolerances

- Information on the ingredients of the foods used (also available upon request).
- Food free of flavor enhancers and vegetarian food: at least 1 dish on the menu. Organic, gluten, fructose, major allergen free, lactose free and vegan food: on request.

Comfort for all generations

We have compiled some **information on accessibility** below. You will find detailed information in the test report.

- Parking spaces directly at the hotel. Reservation is recommended.
- The path between the parking lot and the entrance is 30 m. It is not easy to walk or drive on and has a maximum longitudinal slope of 3% over a distance of 30 meters.
- In 400 m distance there is the streetcar stop "Webergasse/ Andreasstraße".
- The name or logo of the hotel is not clearly recognizable from the outside.
- The entrance is not visually contrasting.
- Access to the building is possible without steps via a lift. The platform is 106 cm wide and 200 cm deep.
- All rooms that can be used by guests and are elevated (except the wellness area) are accessible at ground level or by elevator. The elevator car is 106 cm x 143 cm. An outgoing emergency call in the elevator is confirmed acoustically. Alternatively, stairs are available.

Stairs do not have visually contrasting edges on the first and last steps. Stairs have at least one handrail on one side.

- All passageways/doors are at least 90 cm wide (except for individual doors in the wellness area).
- All raised areas that can be used by guests are well lit, i.e. bright and glare-free.
- The reception counter is 120 cm high. There is another, equivalent communication option available while seated.
- There is no visually clearly perceptible alarm.
- There is no inductive hearing system.
- There are tables with bright and glare-free lighting in the PEBERG restaurant. The font of the menu in the PEBERG restaurant is designed in a straightforward and high-contrast font.
- There is at least one freely available power outlet near the bed in the rooms.
- W-LAN is offered.
- Signage is designed in easy-to-read, high-contrast font.
- Possibility to store medications in a cool place.
- Possibility to prepare meals individually according to the quantity needed.

Room 301 (double room, designed to be barrier-free)

- The movement areas are: in front of essential furnishings (e.g. cabinets) 200 cm x 200 cm; to the left of the bed 50 cm x 182 cm; to the right of the bed 200 cm x 182 cm.
- The bed is 54 cm high.
- The movement areas in the bathroom are: in front of the sink and in front of the WC 200 cm x 110 cm; to the left of the WC 150 cm x 70 cm; to the right of the WC 72 cm x 70 cm.
- There is a fold-up grab bar to the right of the WC.
- The shower is accessible without steps and is 160 cm x 200 cm.
- There are grab bars in the shower. There is a shower seat available or can be provided if needed (fixed, foldable, hook-in or mobile and stable).
- There is an alarm release device available.

Room 208 (double room)

- The movement areas are: in front of essential furnishings (e.g. cabinets) 200 cm x 128 cm; to the left of the bed 88 cm x 183 cm; to the right of the bed 57 cm x 183 cm.
- The bed is 55 cm high.
- In the bathroom, very small movement areas and no grab bars, but a level shower.

Wellness area

- The doors in the wellness area are at least 80 cm wide. Exception: the sauna door is only 68 cm wide.
- The shower is accessible without steps and is 194 cm x 156 cm. Grab bars are not available.

Image Gallery

We have put together some photos from the company / offer for you. You can find more photos in the detailed reports.



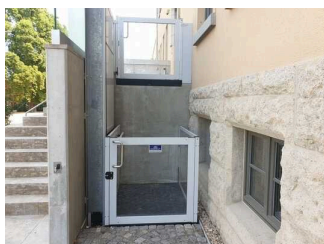
Parking

©Peggy Fauß



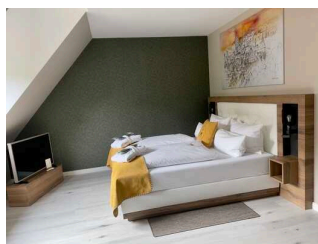
Entrance

©Peggy Fauß



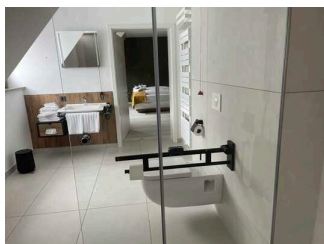
Wheelchair lift at the entrance

©Peggy Fauß



Room 301

©Das Kehrs



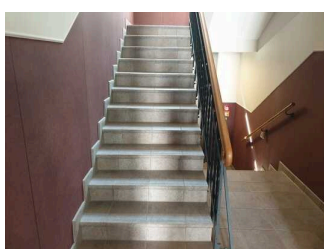
Room 301

©Das Kehrs



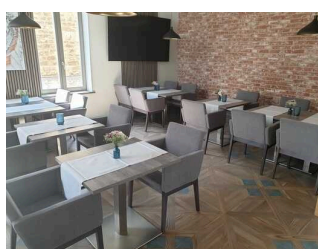
Elevator

©Peggy Fauß



Staircase

©Peggy Fauß



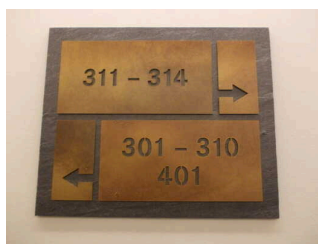
Restaurant Peberg

©Peggy Fauß



Public toilet

©Peggy Fauß



Signage

©Peggy Fauß

Information on the "Tourism for All" labeling system

All establishments and locations certified with the label "Tourism for All" meet the following quality criteria:

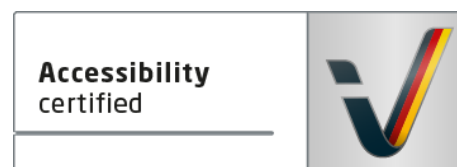
- Data and information on accessibility are collected and checked on site by **external, specially trained evaluators**. The method is not based on self-assessments.
- Data on accessibility is available **in detail** and can be viewed by the guests.
- At least one staff member has successfully passed a **training** on "**Accessibility as a comfort and quality feature**".

The labeling – explanation of the logos and pictograms

The label "**Information about Accessibility**" indicates that detailed and verified information on accessibility is available for all groups of people.



The label "**Accessibility certified**" is based on "Information about Accessibility". It means that the quality criteria defined for specific groups of people are met partially or completely.



The label "**Accessibility certified**" is available in two requirement levels:

"Accessibility certified: partially accessible".

The quality criteria are partially fulfilled for the pictured group of people, i.e. the establishment/location is partially accessible for wheelchair users. The "i" in the pictogram indicates that it is recommended to read again carefully whether the offer meets all (your oder the guest's) individual requirements.



"Accessibility certified: accessible".

The quality criteria are fulfilled for the pictured group of people, i.e. the establishment/location is accessible for wheelchair users.



There are defined quality criteria for **seven groups of people** and a **specific pictogram** for each group.

People with walking disabilities



Wheelchair users



People with hearing impairment



Deaf people



People with visual impairments



Blind people



People with cognitive impairments

