

Short Report



Radisson Blu Hotel Erfurt | ©Sylvia Engel

Radisson Blu Hotel Erfurt

Juri-Gagarin-Ring 127
99084 Erfurt

Tel: +49 361 55100
Fax: +49 361 5510210

info@radisson-erfurt.com
www.radissonblu.com www.Radisson-Erfurt.de

Provider: Hotel Kosmos Erfurt Betriebs GmbH

Konrad-Adenauer-Ufer 5-7
50668 Köln

Tel: +49 221 973056-0

info@radisson-erfurt.com

Welcome!

The 4-star Radisson Blu Hotel is located in the center of the medieval city of Erfurt. The unique and historic old town is only a few minutes' walk away. Perfect for business trips and excursions. Experience the warmth of true hoteliers and enjoy a first-class stay. Our 284 modernly designed rooms & suites will make your stay in the world of Radisson Blu unforgettable. Choose from 6 different room categories from standard to luxury.

TEST RESULT

for

Radisson Blu Hotel Erfurt

99084 Erfurt, Certificate-ID: PA-02277-2021



This offer was classified according to
the criteria of the nationwide label

»Tourism for All«

and, in the period from

March 2022 – February 2025

is entitled to use the label

»Accessibility checked«

and the associated pictograms
in accordance with the contract.

Overview

- Located directly in the center of Erfurt near the pedestrian zone Anger and less than 1 km from the main train station
- 60 m high hotel
- 284 rooms and suites with a fantastic view over the city
- Room service and high-speed WLAN
- 1 hotel bar and 2 restaurants
- 13 attractive conference rooms

Accessibility at a glance

- Parking space for people with disabilities
- Two barrier-free designed rooms
- Building steplessly accessible
- All rooms and facilities usable and elevated for the guest are stepless, accessible via elevator or ramp
- 90 cm minimum width of all passages/doors
- WC for people with disabilities
- Large shower without thresholds
- Shower chair or seat available
- Assistance dogs welcome

Information for people with walking difficulties and wheelchair users

All areas relevant for testing meet the quality criteria of the label "**Accessibility certified – accessible for people with walking disabilities and partially accessible for wheelchair users**".

Some **information on accessibility** are listed below. For detailed information please see the evaluation report.

- There are two marked parking spaces for people with disabilities (parking space size: 350 cm x 500 cm).
- The path from the parking lot to the main entrance is 80 m long. It is easy to walk and drive on and has a maximum longitudinal gradient of 4% over a distance of 3 meters.
- The Krämpfertor streetcar stop (line 4) is 100 m away.
- The path from the streetcar stop to the main entrance is 100 m long. It is easy to walk and drive on and has a maximum longitudinal gradient of 2% over a distance of 6 meters.
- The building is steplessly accessible via the main entrance. The path in the entrance area is easy to walk and drive on and has a maximum longitudinal gradient of 10% over a distance of 3 m.
- The building is steplessly accessible via the side entrance with a door threshold 2 cm high.
- All rooms and facilities usable and elevated for guests are stepless, accessible by elevator or ramp.
- The elevator cabin is 197 cm x 149 cm.
- The ramp to the Classico restaurant has a maximum slope of 5% and a total length of 5 meters.
- All doors/passages that can be used by guests and are elevated are at least 90 cm wide.
- The reception desk is 100 cm high at the lowest point. There is another equivalent means of communication while seated.
- In the Classico restaurant and in the breakfast room there are tables that can be moved underneath (maximum height 80 cm, can be moved underneath at a height of 67 cm and a depth of 30 cm).
- Aids offered: wheelchair

Room 419 (double bedroom)

- There is another identical room no. 319.
- The maneuvering spaces are:
in front of essential immobile furnishings (e.g. wardrobe) 127 cm x 176 cm;
- left of the bed 127 cm x 197 cm, on the right the bed stands next to the wall.
- The bed is 60 cm high.
- A nursing bed cannot be provided.
- The maneuvering spaces in the bathroom are:
in front of / behind the door at least 125 cm x 200 cm;
in front of the toilet 200 cm x 182 cm;

in front of the washbasin 127 cm x 200 cm;
left of the toilet 120 cm x 59 cm and right of the toilet 96 cm x 59 cm.

- There are handles which can be folded up on the right and left of the toilet.
- The washbasin is wheelchair accessible.
- The mirror can be seen while standing or sitting.
- The shower is accessible without thresholds.
- The maneuvering space in the shower is 120 cm x 120 cm.
- A shower seat is available or can be provided if required.
- There are no grab handles in the shower.
- An alarm trigger (cord, button) is present.

Public toilet for people with disabilities

- The maneuvering spaces are:
in front of / behind the door, in front of the toilet and in front of the washbasin at least 150 cm x 150 cm;
left of the toilet 116 cm x 55 cm and right of the toilet 47 cm x 55 cm.
- There are handles which can be folded up on the right and left of the toilet.
- The washbasin is wheelchair accessible.
- The mirror can be seen while standing or sitting.
- An alarm trigger (cord, button) is present.

Information for people with hearing impairments and deaf people

Some **information on accessibility** are listed below. For detailed information please see the evaluation report.

- The alarm is clearly visible in the following rooms: at the reception and room 319 and 419
- There is no audio induction loop.
- An outgoing emergency call in the elevator is confirmed audibly.
- Alternatively stairs are available.
- In the restaurant Classico and in the breakfast room there are tables with bright and glare-free lighting, on which there are no lamps standing or hanging that restrict the field of vision or eye contact. There is a seating area with low background noises (e.g. seating corner, separate room).
- In the sports bar there are tables with bright and glare-free lighting, on which there are no lamps standing or hanging that restrict the field of vision or eye contact. There is no seating area with low background noises (e.g. seating corner, separate room).

Room 319 and 419 (double bedroom, identical in construction)

- There is at least one electrical outlet near the bed.
- WiFi is offered.

Information for visually impaired and blind people

Some **information on accessibility** are listed below. For detailed information please see the evaluation report.

- Assistance dogs are allowed in relevant areas / rooms.
- Outdoor paths usually do not have visually contrasting or tactilely detectable walkway boundaries.
- The entrance is visually rich in contrast and recognizable by a tactile change of floor covering.
- The evaluated areas that can be used by the guest are predominantly well lit, i.e. bright and glare-free.
- The signage is designed in clearly legible and contrasting font.
- There are no obstacles, e.g. objects protruding into the path / room.
- There are few glass doors without safety markings.
- An outgoing emergency call in the elevator is confirmed audibly.
- The stopping position is not announced by spoken commands. The control elements are not visually rich in contrast but tactilely detectable.
- Steps are not visually rich in contrast.
- Stairs have at least a handrail on one side.
- The menu font in the restaurant is straightforward and visually rich in contrast.
- Information is not available in Braille or prismatic writing.
- Aids offered: reading aids (reading glasses, magnifying glasses, etc.)

Information for guests with cognitive impairments

Some **information on accessibility** are listed below. For detailed information please see the evaluation report.

- The name or logo of the establishment is clearly recognizable from the outside.
- The destinations of the paths are within sight. There are signs at a visible distance or an uninterrupted guidance system.

- A business card with the address and telephone number of the hotel is visibly displayed in the bedroom.
- There is no menu with pictures. The dishes are visibly presented (buffet, bar).
- There is no information in easy language.

Information for allergy sufferers and people with food intolerances

We have compiled some **information for allergy** sufferers below. Detailed information can be found in the test report.

House dust

- Short pile carpet in accessible areas that is vacuumed daily. Smooth floor in accessible areas that is damp mopped daily.
- Allergy-safe comforters and pillows without down available.

Food intolerances

- Information available for allergy sufferers and guests with special dietary needs (e.g., restaurants, health food stores).
- Information on the ingredients of the food used (also available on request).
- Vegetarian food: at least 1 dish on the menu; food free of flavor enhancers, organic food, food free of gluten, fructose, major allergens, lactose-free food and vegan food: upon request.

Comfort for all generations

We have compiled some **information on accessibility** below. Detailed information can be found in the test report.

- The path from the parking lot to the main entrance is easy to walk and drive on and has a maximum longitudinal gradient of 4% over a distance of 3 meters.
- The Krämpfertor streetcar stop (line 4) is 100 m away. The path from the streetcar stop to the main entrance is easily accessible and has a maximum longitudinal slope of 2% over a distance of 6 m. The building is accessible without steps via the streetcar stop Krämpfertor (line 4).
- The building is accessible without steps via the main entrance. The path in the entrance area is easy to walk and drive on and has a maximum longitudinal gradient of 10% over a distance of 3 m.

- The building is accessible without steps via the side entrance with a door threshold of 2 cm in height.
- All rooms and facilities that can be used and raised for the guest are accessible without steps, via an elevator or a ramp.
- The elevator cabin is 197 cm x 149 cm.
- The ramp to the Classico restaurant has a maximum slope of 5% and a total length of 5 meters.
- All doors/passages that can be used by guests and are raised are at least 90 cm wide.
- The reception desk is 100 cm high at the lowest point. There is another, equivalent means of communication while seated.
- Aids offered: reading aids (reading glasses, magnifying glasses), wheelchair.
- The alarm is clearly visible at the reception: in rooms 319 and 419 and at the reception desk.
- There is no inductive hearing system.
- An outgoing emergency call in the elevator is confirmed acoustically.
- In the Classico restaurant and breakfast room, there are tables with bright, glare-free lighting, with no lamps standing or hanging that interfere with the visual field or eye contact.
- The entrance is visually contrasting.
- The elevated areas that can be used by guests are predominantly well lit, i.e., bright and glare-free.
- Signage is designed in legible, high-contrast lettering.
- There are occasional glass doors without safety markings.
- Stair treads are not visually contrasting. Stairs have at least one handrail on one side.
- The font of the menu in the Classico restaurant is designed in a straightforward and high-contrast font.
- Hotel name or logo are clearly recognizable from the outside.
- Trail destinations are in plain sight. There are wayfinding signs at visible intervals or an uninterrupted wayfinding system.
- A business card with the hotel's address and telephone number is visibly displayed in the bedroom.
- Possibility to compose meals individually according to the quantity needed.
- Snacks also available outside of scheduled meal times.
- Possibility to keep medicines in a cool place.

Room 419 (double room)

- There is another room of the same construction (no. 319).
- The movement areas are:
 - in front of essential, fixed furnishings (e.g. wardrobe) 127 cm x 176 cm;
 - to the left of the bed 127 cm x 197 cm,
 - on the right, the bed is against the wall.
- The bed is 60 cm high.
- There is at least one freely available socket near the bed.

- W-LAN is provided.
- The movement areas in the bathroom are:
 - in front of/behind the door at least 125 cm x 200 cm;
 - in front of the WC 200 cm x 182 cm;
 - in front of the sink 127 cm x 200 cm;
 - to the left of the WC 120 cm x 59 cm
 - to the right of the WC 96 cm x 59 cm.
- There are grab rails to the left and right of the WC. The handholds can be folded up.
- The shower is accessible without steps. The movement area in the shower is 120 cm x 120 cm.
- A shower seat is available or can be provided if required.
- Grab rails are available in the shower.

Image Gallery

We have put together some photos from the company / offer for you. You can find more photos in the detailed reports.



Parking lot

©René Strobach



**Tram stop
Krämpfertor – line 4**

©René Strobach



Main entrance

©René Strobach



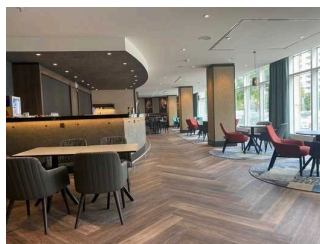
**Side entrance
"Krämpferstraße"**

©René Strobach



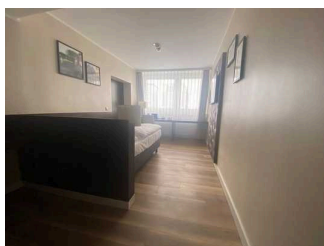
Reception

©René Strobach



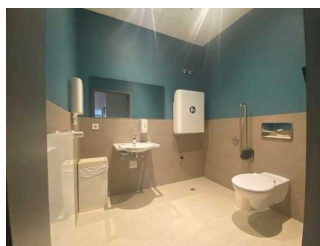
Restaurant "Classico"

©René Strobach



**Room 319 and
419 identical in
construction**

©René Strobach



Toilet

©René Strobach

Information on the "Tourism for All" labeling system

All establishments and locations certified with the label "Tourism for All" meet the following quality criteria:

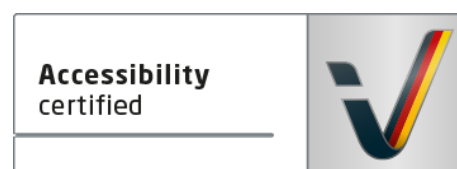
- Data and information on accessibility are collected and checked on site by **external, specially trained evaluators**. The method is not based on self-assessments.
- Data on accessibility is available **in detail** and can be viewed by the guests.
- At least one staff member has successfully passed a **training** on "**Accessibility as a comfort and quality feature**".

The labeling – explanation of the logos and pictograms

The label "**Information about Accessibility**" indicates that detailed and verified information on accessibility is available for all groups of people.



The label "**Accessibility certified**" is based on "Information about Accessibility". It means that the quality criteria defined for specific groups of people are met partially or completely.



The label "**Accessibility certified**" is available in two requirement levels:

"Accessibility certified: partially accessible".

The quality criteria are partially fulfilled for the pictured group of people, i.e. the establishment/location is partially accessible for wheelchair users. The "i" in the pictogram indicates that it is recommended to read again carefully whether the offer meets all (your oder the guest's) individual requirements.



"Accessibility certified: accessible".

The quality criteria are fulfilled for the pictured group of people, i.e. the establishment/location is accessible for wheelchair users.



There are defined quality criteria for **seven groups of people** and a **specific pictogram** for each group.

People with walking disabilities



Wheelchair users



People with hearing impairment



Deaf people



People with visual impairments



Blind people



People with cognitive impairments

