

Short Report



Motorhome site "Gateway to the city of Erfurt" | ©Stadtverwaltung Erfurt

Motorhome site "Gateway to the city of Erfurt"

Gothaer Straße 30
99094 Erfurt

Tel: +49 361 65314820

info@erfurt-wohnmobil.de
www.erfurt-wohnmobil.de

Welcome!

Not far from the Erfurt trade fair and the egapark you will find our motorhome site "Gateway to the City of Erfurt", opened in 2021.

The new site blossoms in the spirit of the flower city of Erfurt – laid out in the middle of greenery and divided into two terraces for a total of 48 motorhomes.

At the heart of the site, the new multi-purpose building, you will find the reception with personal guest services, a selection of souvenirs and refreshments, modern sanitary facilities, barrier-free WCs and showers, single washbasins, family bathrooms with nappy-changing facilities, a kitchen with lounge area, as well as washing machines and tumble dryers. Two service stations for supply and disposal as well as a CamperClean station complete the offer. The location offers ideal access to the highway (A4, A71) and public transport to the city center.

TEST RESULT

for

Wohnmobilstellplatz "Tor zur Stadt Erfurt"

99094 Erfurt, Certificate-ID: PA-13325-2022



This offer was classified according to
the criteria of the nationwide label

»Tourism for All«

and, in the period from

January 2023 – December 2025

is entitled to use the label

»Accessibility checked«

and the associated pictograms
in accordance with the contract.



Motorhome site
"Gateway to the city
of Erfurt

©Stadtverwaltung Erfurt



Motorhome site
"Gateway to the city
of Erfurt

©Stadtverwaltung Erfurt

Overview

- 48 pitches for motorhomes in a quiet location with access to electricity and water.
- Multi-purpose building with barrier-free toilets and showers, single washbasins and family bathrooms with baby changing facilities, kitchen with lounge area, a separate room with washing machines and tumble dryers, and the reception with personal guest services and a selection of souvenirs and drinks
- Proximity to the trade fair and egapark
- Ideal connection to the highway (A4, A71) and public transport to the city center

Accessibility at a glance

- All rooms and facilities that can be used and raised for the guest are accessible without steps
- 90 cm minimum width of all passages/doors
- WC for people with disabilities
- Sanitary room for people with disabilities
- Large shower without thresholds
- Shower chair or seat available
- Assistance dogs welcome

Information for people with walking difficulties and wheelchair users

All areas relevant for testing meet the quality criteria of the label "**Accessibility certified – partially accessible for people with walking disabilities and wheelchair users**".

Some **information on accessibility** are listed below. For detailed information please see the evaluation report.

- There is an unmarked parking space next to the reception building.
- The streetcar stop P+R Messe (line 2) is 200 meters away.
- The path from the parking lot to the entrance area with reception/registration is easy to walk and drive on and has a maximum longitudinal slope of 2% over a distance of 6 m.
- The path from the bus stop to the entrance area with reception/registration and on to the mobile home sites is easy to walk and drive on and has a maximum longitudinal gradient of 6% over a distance of 20 m.
- All rooms and facilities that can be used and raised for the guest are accessible without steps/at ground level.
- All doors/passages that can be used and raised for the guest are at least 90 cm wide.
- The reception/cash counter is 75 cm high at the lowest point.

Camper pitches

- There are no marked parking spaces for people with disabilities.
- The pitches have a size of 13 m x 6 m. Electricity and water points are available. The pitches are low vibration in terms of surface condition and easy to walk and drive on (e.g. asphalt, narrow-grooved slabs, etc.).
- The outdoor paths on the RV park are easy to walk and drive on.
- There are seating areas at the end of each row.

Kitchen

- The work surface in the kitchen, the sink and the stove are not wheelchair compatible.
- The dining tables are wheelchair compatible (maximum height 80 cm, wheelchair compatible at a height of 67 cm and a depth of 30 cm).

Sanitärraum für Menschen mit Behinderung

- The manoeuvring spaces are:
in front of the washbasin and in front of the WC 200 cm x 250 cm;
to the left of the WC 90 cm x 70 cm; to the right of the WC 120 cm x 70 cm.
- There are grab rails to the left and right of the WC.
- Both grab rails are flipped up.
- The washbasin is wheelchair compatible.
- The mirror can be viewed while sitting or standing.

- The shower is accessible without steps or thresholds.
- The shower area is 150 cm x 150 cm.
- Grab rails are available in the shower.
- A shower seat is available or can be provided if needed (fixed, folding, hook-in or mobile and stable).
- There is an alarm trigger available.

Public WC for people with disabilities

- The manoeuvring spaces are:
in front of the sink and in front of the WC 200 cm x 340 cm;
to the left and right of the WC 100 cm x 70 cm.
- There are grab rails to the left and right of the WC.
- Both grab rails are flipped up.
- The washbasin can be moved underneath.
- The mirror can be viewed while sitting or standing.
- There is an alarm trigger available.

Information for people with hearing impairments and deaf people

Some **information on accessibility** are listed below. For detailed information please see the evaluation report.

- There is no clearly visible alarm.
- There is no audio induction loop system at the reception and sales counter.

Information for visually impaired and blind people

Some **information on accessibility** are listed below. For detailed information please see the evaluation report.

- The entrance area is visually contrasting to the surroundings.
- Assistance dogs (companion dogs, guide dogs for the blind, etc.) may be brought into all relevant areas/rooms of the establishment/offers.
- Pathways on the RV park usually have a tactile walkway boundary.

- Almost all evaluated areas that can be used by guests (entrance area, cashier/counter, sleeping rooms, hallways, corridors) are well illuminated, i.e., bright and glare-free.
- Signage designed in legible lettering.
- A dog shower is available.
- Information is not available in Braille or prismatic font.

Information for guests with cognitive impairments

Some **information on accessibility** are listed below. For detailed information please see the evaluation report.

- The name of the RV park is clearly visible from the outside.
- The destinations of the paths are within sight or there are path signs at a constantly visible distance.
- There is no information available in plain language.

Comfort for all generations

We have compiled some **information on accessibility** below. Detailed information can be found in the test report.

- The P+R Messe streetcar stop (line 2) is 200 meters away.
- The path from the parking lot to the entrance area with reception/registration is easy to walk and drive on and has a maximum longitudinal slope of 2% over a distance of 6 meters.
- The path from the bus stop to the entrance area with reception/registration and on to the camper pitches is easy to walk and drive on and has a maximum longitudinal gradient of 6% over a distance of 20 m.
- The name of the RV park is clearly recognizable from the outside.
- The entrance area is visually contrasting to the surroundings.
- All rooms and facilities that can be used and raised for the guest are accessible without steps/at ground level.
- All doors/passages that can be used and raised for the guest are at least 90 cm wide.
- Almost all elevated and guest usable areas are well lit, i.e. bright and glare-free.
- Trail destinations are within sight or trail signs are provided at a distance that is visible at all times.
- Signage is designed in legible lettering.

- There is no clearly visible alarm.
- There is no induction loop at the front desk and vending counter.

Camper pitches

- The pitches have a size of 13 m x 6 m. Electricity columns as well as water taps are available.
- The surface of the pitches is low-vibration and easy to walk and drive on (e.g. asphalt, narrow-grooved slabs, etc.).
- The outdoor paths on the RV park are easy to walk and drive on.

Sanitary room

- The movement areas in the bathroom are:
 - in front of the sink and in front of the WC 200 cm x 250 cm
 - to the left of the WC 90 cm x 70 cm
 - to the right of the WC 120 cm x 70 cm.
- There are grab rails on the left and right side of the WC.
- Both grab rails can be folded up.
- The shower is accessible without steps or thresholds.
- The shower area is 150 cm x 150 cm.
- Grab rails are available in the shower.
- A shower seat is available or can be provided if needed (fixed, folding, hook-in or mobile and stable).
- There is an alarm trigger available.

Image Gallery

We have put together some photos from the company / offer for you. You can find more photos in the detailed reports.



Pitch for people with disabilities

©René Strobach



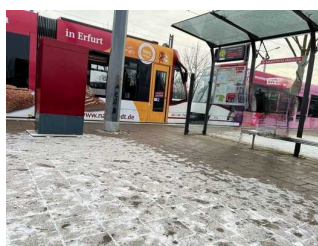
Parking place in front of the entrance

©René Strobach



Tram stop P+R Messe – line 2

©René Strobach



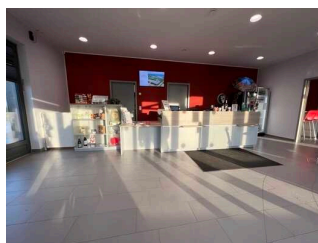
Tram stop P+R Messe – line 2

©René Strobach



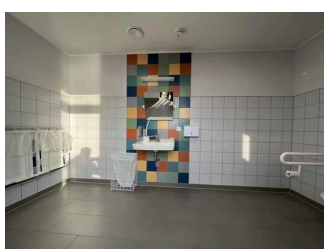
Entrance

©René Strobach



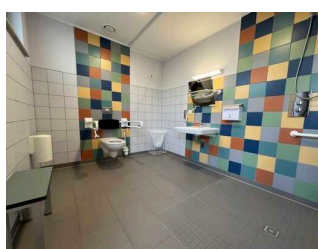
Reception / Shop / Information

©René Strobach



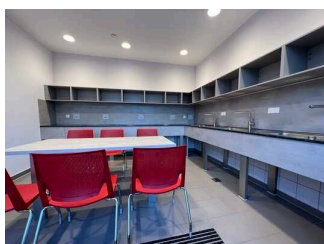
Public toilet

©René Strobach



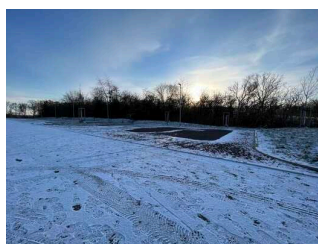
Toilet, Shower, Wash room

©René Strobach



Kitchen

©René Strobach



Camper pitches

©René Strobach

Information on the "Tourism for All" labeling system

All establishments and locations certified with the label "Tourism for All" meet the following quality criteria:

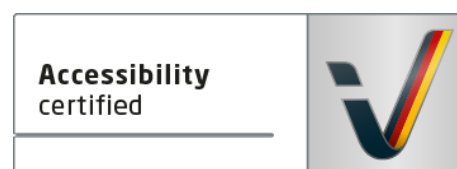
- Data and information on accessibility are collected and checked on site by **external, specially trained evaluators**. The method is not based on self-assessments.
- Data on accessibility is available **in detail** and can be viewed by the guests.
- At least one staff member has successfully passed a **training** on "**Accessibility as a comfort and quality feature**".

The labeling – explanation of the logos and pictograms

The label "**Information about Accessibility**" indicates that detailed and verified information on accessibility is available for all groups of people.



The label "**Accessibility certified**" is based on "Information about Accessibility". It means that the quality criteria defined for specific groups of people are met partially or completely.



The label "**Accessibility certified**" is available in two requirement levels:

"Accessibility certified: partially accessible".

The quality criteria are partially fulfilled for the pictured group of people, i.e. the establishment/location is partially accessible for wheelchair users. The "i" in the pictogram indicates that it is recommended to read again carefully whether the offer meets all (your oder the guest's) individual requirements.



"Accessibility certified: accessible".

The quality criteria are fulfilled for the pictured group of people, i.e. the establishment/location is accessible for wheelchair users.



There are defined quality criteria for **seven groups of people** and a **specific pictogram** for each group.

People with walking disabilities



Wheelchair users



People with hearing impairment



Deaf people



People with visual impairments



Blind people



People with cognitive impairments

