

## Short Report



Old synagogue | ©Atelier Papenfuss

## Old synagogue Erfurt

Waagegasse 8  
99084 Erfurt

Tel: + 49 361 6551520  
Fax: +49 361 6551669

altesynagoge@erfurt.de  
[www.juedisches-leben.erfurt.de](http://www.juedisches-leben.erfurt.de)

**Provider: Landeshauptstadt Erfurt | Stadtverwaltung | Kulturdirektion | Geschichtsmuseen**

99111 Erfurt

Tel: +49 361 655-0

stadtverwaltung@erfurt.de

## Welcome!

The Old Synagogue, with its oldest components dating from the 11th century, is the oldest synagogue in Central Europe preserved up to the roof. An extraordinary museum was created here in 2009 and a place where medieval material evidence of Erfurt's Jewish community is accessible to the public. The exhibition of the Old Synagogue illustrates the history of the first Jewish community of Erfurt. Gravestones from the destroyed medieval cemetery can be seen in the courtyard. The building history of the synagogue is the topic on the first floor. The cellar houses the treasure found near the synagogue, buried by a Jew during the pogrom of 1349. The Erfurt Hebrew manuscripts are thematized on the upper floor.

# TEST RESULT

---

for

## Alte Synagoge Erfurt

99084 Erfurt, Certificate-ID: PA-02284-2025



This offer was classified according to  
the criteria of the nationwide label

**»Tourism for All«**

and, in the period from

**December 2025 – November 2028**

is entitled to use the label

**»Accessibility checked«**

and the associated pictograms  
in accordance with the contract.

## Overview

- Oldest synagogue in Central Europe preserved up to the roof.
- Exhibition on the history of the first Jewish community in Erfurt, the Erfurt Hebrew manuscripts and the Erfurt treasure from 1349, which was buried near the synagogue
- Public guided tours every Saturday (duration: approx. 90 minutes)
- Video guide (German, English, French) in an adult and a children's version
- Public parking in the parking garage at Domplatz
- Streetcar stop "Fischmarkt" – lines 2/3/4 and 6en enabled (e.g. headphones, neck ring loops).
- Aids offered: reading aids (magnifying glasses)

## Accessibility at a glance

- Public parking for people with disabilities
- Building accessible without steps
- All rooms and facilities that can be used and raised for the guest are accessible without steps or via an elevator
- 90 cm minimum width of all passages/doors
- WC for people with disabilities
- Assistance dogs welcome

# Information for people with walking difficulties and wheelchair users

All areas relevant for testing meet the quality criteria of the label "**Accessibility certified – accessible for people with walking disabilities and partially accessible for wheelchair users**".

Some **information on accessibility** are listed below. For detailed information please see the evaluation report.

- There is a public parking lot available at 150 m distance. The surface quality of the car park is not easy to walk and drive on.
- The S-Bahn station Fischmarkt is 250 m away.
- The path in front of the entrance is partly difficult to walk and drive on (historical cobblestones).
- The building is infinitely accessible.
- All evaluated rooms and facilities available to the guests are infinitely accessible at ground level or via an elevator.
- The elevator cabin measures 114 cm x 150 cm. The elevator door is 90 cm wide.
- All evaluated passageways/doors available to the guests are at least 90 cm wide.
- The cash desk is at its lowest point 85 cm high. There is another, equivalent communication possibility while in a sitting position.
- The exhibits are predominately visible when seated.
- The information on the exhibits is predominately readable when seated.
- Guided tours for people with walking impairments and wheelchair users are offered. A reservation in advance is necessary.
- Special trained guides ensure that people with walking impairments and wheelchair users can take part in any guided tour.
- There is a public toilet for people with disabilities, which is accessible from both sides (minimum 80 cm). There are folding grab rails on the left and right of the toilet.
- Mobile or fixed seats are available for people with walking disabilities, which may be used during the guided tour.
- The entire route of the guided tour is infinitely variable for wheelchair users.
- Offered aids: seating available

# Information for people with hearing impairments and deaf people

Some **information on accessibility** are listed below. For detailed information please see the evaluation report.

- There is no alarm.
- There is no audio induction loop system.
- An outgoing emergency call in the elevator is confirmed audibly. Alternatively stairs are available.
- The information on the exhibits is predominately provided in writing.
- There is audible information on the exhibits (audioguide).
- Information on the exhibits is displayed photo realistically.
- Guided tours are offered for people with hearing impairment, but not for deaf people. A reservation in advance is necessary
- Guided tours with FM systems (e.g. headphones, neck loops) are available for people with hearing impairments.

# Information for visually impaired and blind people

All areas relevant for testing meet the quality criteria of the label "**Accessibility certified – partially accessible for people with visual impairments**".

Some **information on accessibility** are listed below. For detailed information please see the evaluation report.

- Assistance dogs are allowed in relevant areas/rooms.
- External paths usually have tactilely detectable sidewalk boundaries.
- The entrance is visually rich in contrast.
- All evaluated and usable areas for the guest are well illuminated, i.e. bright and glare-free.
- The signage is designed in clearly legible and contrasting font.
- An outgoing emergency call in the elevator is confirmed audibly.
- The break position is not announced by spoken commands.
- The operating controls are not visually rich in contrast, but tactilely detectable.
- Alternatively stairs are available.
- At least at the first and last step, stairs have visually contrasting edges.
- Steps are visually rich in contrast. Stairs have at least a handrail on one side.
- The exhibits are usually well illuminated.

- The information on the exhibits is predominately provided in writing and is visually rich in contrast.
- There is audible information on the exhibits.
- Guided tours for people with visual impairments and blind people are offered. A reservation in advance is necessary.
- Tactilely detectable exhibits are integrated in the guided tour.
- An audio guide is available which can be operated independently by people with visual impairments / blind people.
- Information is not available in Braille or prismatic font.
- Offered aids: reading aids (magnifying glasses, etc.)

## Information for guests with cognitive impairments

Some **information on accessibility** are listed below. For detailed information please see the evaluation report.

- The name or logo of the museum is clearly recognizable from the outside.
- Signs in visible distance or an uninterrupted guidance system are available.
- The information on the exhibits is predominately provided in writing, but not in easy language.
- Information on the exhibits/ is displayed photo realistically.
- There are no guided tours available for people with cognitive impairments.
- There is no information in easy language.

## Comfort for all generations

We have compiled some **information on accessibility** below. Detailed information can be found in the test report.

- Parking is available in the parking garage at Domplatz (400 m).
- The Fischmarkt streetcar stop (lines 2/3/6) is 250 m away.
- The path in front of the entrance is partly difficult to walk and drive on (historical cobblestones).
- The entrance is visually contrasting. The name and logo of the synagogue are clearly recognizable from the outside.
- The building is accessible without steps.

- All rooms and facilities that can be used and elevated for the guest are accessible without steps or via an elevator.
- All doors/passages that can be used and raised for the guest are at least 90 cm wide.
- All raised and usable areas for the guest as well as the exhibits are well lit, i.e. bright and glare-free.
- There are wayfinding signs at visible intervals or an uninterrupted wayfinding system. The checkout counter is 85 cm high at its lowest point.
- There is no inductive hearing system.
- An outgoing emergency call in the elevator is confirmed acoustically. Alternatively, there are stairs. Stair treads are visually contrasting and have at least one handrail on one side.
- Information about exhibits is conveyed primarily in written form. Signage is designed in legible, high-contrast lettering. There is audio information about the exhibits (audio guide).
- Information about the exhibits is partially presented in a photo-realistic manner.
- Guided tours for people with limited mobility are offered. Mobile or fixed seating is available for this purpose. The entire tour is step-free. Advance reservation is required.
- Guided tours with FM equipment are made possible for people with hearing disabilities (e.g., headphones, neck ring loops).
- Aids offered: reading aids (magnifying glasses)

# Image Gallery

We have put together some photos from the company / offer for you. You can find more photos in the detailed reports.

---



**Parking lot**

©René Strobach



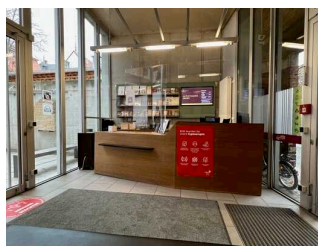
**Tram stop  
"Fischmarkt" – lines  
3/4/5/6**

©René Strobach



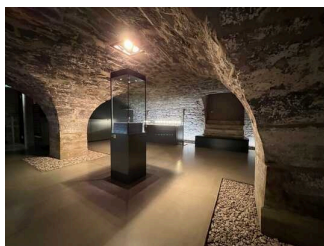
**Entrance**

©René Strobach



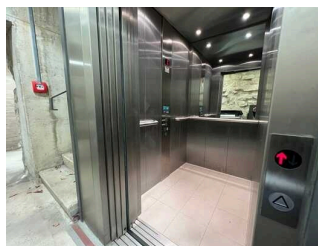
**Information and cash  
desk**

©René Strobach



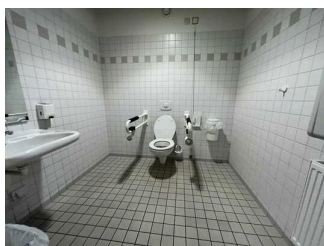
**Exhibition in  
the museum old  
synagogue**

©René Strobach



**View into the elevator**

©René Strobach



**Toilet**

©René Strobach

## Information on the "Tourism for All" labeling system

All establishments and locations certified with the label "Tourism for All" meet the following quality criteria:

- Data and information on accessibility are collected and checked on site by **external, specially trained evaluators**. The method is not based on self-assessments.
- Data on accessibility is available **in detail** and can be viewed by the guests.
- At least one staff member has successfully passed a **training** on "**Accessibility as a comfort and quality feature**".

### The labeling – explanation of the logos and pictograms

The label "**Information about Accessibility**" indicates that detailed and verified information on accessibility is available for all groups of people.



The label "**Accessibility certified**" is based on "Information about Accessibility". It means that the quality criteria defined for specific groups of people are met partially or completely.



The label "**Accessibility certified**" is available in two requirement levels:

#### "Accessibility certified: partially accessible".

The quality criteria are partially fulfilled for the pictured group of people, i.e. the establishment/location is partially accessible for wheelchair users. The "i" in the pictogram indicates that it is recommended to read again carefully whether the offer meets all (your or the guest's) individual requirements.



#### "Accessibility certified: accessible".

The quality criteria are fulfilled for the pictured group of people, i.e. the establishment/location is accessible for wheelchair users.



There are defined quality criteria for **seven groups of people** and a **specific pictogram** for each group.

People with walking disabilities



Wheelchair users



People with hearing impairment



Deaf people



People with visual impairments



Blind people



People with cognitive impairments

