

Short Report



The German Horticultural Museum in the middle of egapark | ©Annette Kummer

German Horticultural Museum

Gothaer Straße 50
99094 Erfurt

Tel: +49 361 22399-0
Fax: +49 361 22399-13

service@gartenbaumuseum.de
www.gartenbaumuseum.de

Provider: Stiftung Deutsches Gartenbaumuseum Erfurt

Cyriaksburg Gothaer Straße 50
99094 Erfurt

Tel: +49 (0) 361 223990

service@gartenbaumuseum.de

Welcome!

A whole museum for horticulture – that is unique in Germany. The building and location of the German Horticultural Museum are also unique: a fortress in the former egapark garden show grounds on one of the two hills in the city. But horticulture deserves it! Because for thousands of years people have been able to secure their nutrition and produce a wide variety of products through the intelligent use of plants and soil. The museum's exhibitions and workshops provide insights into the secrets of the garden and plant world. The exhibition areas are accessible for people with limited mobility via elevators and stair lifts. Induction loop amplifiers for hearing aids can be used during guided tours. Our events and tours are tailored to the individual needs of groups.

TEST RESULT

for

Deutsches Gartenbaumuseum

99094 Erfurt, Certificate-ID: PA-12098-2021



This offer was classified according to
the criteria of the nationwide label

»Tourism for All«

and, in the period from

February 2023 – January 2026

is entitled to use the label

»Accessibility checked«

and the associated pictograms
in accordance with the contract.



In the "Paradise" themed room, ideas of the afterlife and this world from various cultures can be seen and heard.

©Delf Zeh



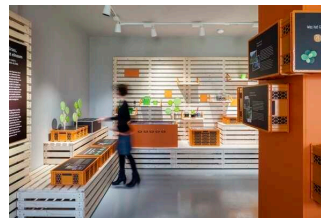
In the shopping paradise the variety of horticulture is shown at a replica supermarket.

©Delf Zeh



Various plants and their uses are explained in the romantic herb garden.

©Annette Kummer



The "Urban Gardening" themed room is about community gardening in Erfurt, Germany and around the world.

©Deutsches Gartenbaumuseum

Overview

- A whole museum for horticulture – unique in Germany
- Location in the middle of egapark
- Permanent exhibition leads from blooming fantasies to down-to-earth gardening to outer space – colorful, digital and playful
- Guided tours and hands-on activities for tour groups
- Parking at the exhibition center, public transport stop "egapark" (line 2)

Accessibility at a glance

- Parking space for people with disabilities
- Building accessible without steps via a lift
- All rooms usable by guests are accessible without steps, via lifts, lifts and stair platform lifts
- 90 cm minimum width of all passageways/doors
- Public WC for people with disabilities
- Assistance dogs welcome
- Aids available: wheelchair, trolley at egapark entrance, EgaExpress with low entrance
- The exhibition features acoustic, olfactory and photorealistic displays
- Possibilities for conveying information: audio guide, multimedia guide, app about the exhibition for mobile phones, films
- Guided tours for people with disabilities are offered (advance booking required).

Information for people with walking difficulties and wheelchair users

All areas relevant for testing meet the quality criteria of the label "**Accessibility certified – accessible for people with walking disabilities and accessible for wheelchair users**".

Some **information on accessibility** are listed below. For detailed information please see the evaluation report.

- The streetcar stop egapark – line 2 is located 100 m from the main entrance of egapark.
- There are twelve marked parking spaces for people with disabilities at the main entrance of egapark (parking space size: 350 cm x 500 cm).
- The path from the car park to the main egapark entrance is 50 m long. It is easy to walk and drive on and has a maximum longitudinal gradient of 6 % over a distance of 6 m.
- The path from the main egapark entrance to the horticultural museum entrance is 1200 m long. It is easy to walk and drive on and has a maximum longitudinal gradient of 6 % over a distance of 10 m.
- The museum is steplessly accessible via an outdoor lift. The cabin of the outdoor lift to the museum foyer is 110 cm x 140 cm.
- All areas are accessible without steps, via lifts, hoists or stair platform lifts. The lift cabin in the museum is 110 cm x 210 cm. The platform of the lift to the event room is 110 cm x 145 cm. The platform of the stair lifts to the permanent exhibition on the ground floor, from the ground floor to the basement permanent exhibition and to the basement greenhouse is 80 cm x 125 cm.
- All evaluated passageways/doors available to the guests are at least 90 cm wide.
- The cash desk is 85 cm high.
- The exhibits are predominately visible when seated.
- The information on the exhibits is predominately readable when seated.
- Technical options for conveying information: App about the exhibition for cell phones and on loanable tablets
- There are guided tours available for people with walking impairments and wheelchair users. A reservation in advance is necessary.
- Mobile or fixed seats are available for people with walking disabilities, which may be used during the guided tour.
- The entire route of the guided tour is steplessly variable for wheelchair users.
- Aids on offer: wheelchair, trolley at the main egapark entrance, EgaExpress with low entrance

Public toilet for people with disabilities (ground floor)

- The manoeuvring spaces are:
in front of the toilet and in front of the washbasin at least 150 cm x 150 cm;
in front of the toilet 150 cm x 144 cm; left of the toilet 92 cm x 70 cm, right of the toilet 82 cm x 70 cm.
- There are flipped-up grab rails available on the right and left of the toilet.

- The sink is wheelchair compatible.
- The mirror can be seen while standing or sitting.
- An alarm trigger is available.

Information for people with hearing impairments and deaf people

All areas relevant for testing meet the quality criteria of the label "**Accessibility certified – partially accessible for people with hearing impairment**".

Some **information on accessibility** are listed below. For detailed information please see the evaluation report.

- There is no visually clearly perceptible alarm.
- There is no audio induction loop system.
- An outgoing emergency call in the elevator is confirmed visually.
- Alternatively stairs are available.
- The information on the exhibits is predominately provided in writing.
- There is audible information on the exhibits.
- Information on the exhibits is displayed photo realistically.
- Technical possibilities of information for people with hearing impairment/deaf people: Multimedia guide, films, app about the exhibition for mobile phones
- Guided tours are offered for people with hearing impairment, but not for deaf people.
- Guided tours with FM systems (e.g. headphones, neck loops) are available for people with hearing impairments.

Information for visually impaired and blind people

All areas relevant for testing meet the quality criteria of the label "**Accessibility certified – partially accessible for people with visual impairments**".

Some **information on accessibility** are listed below. For detailed information please see the evaluation report.

- Assistance dogs may be brought into all relevant areas/rooms.
- Exterior walkways usually have a visually contrasting and tactilely detectable walkway boundary.

- The entrance to the museum is visually contrasting.
- Elevated areas that are usable by guests are well lit, i.e., bright and glare-free.
- There are no visually contrasting or tactile floor indicators.
- Signage is designed in legible, high-contrast lettering.
- There are glass doors without security markings.
- An outgoing emergency call in the elevators is acknowledged acoustically. The stop position is announced by voice. The operating elements are designed to be visually contrasting and tactilely detectable.
- Alternatively, stairs are provided.
- Stair treads are not visually contrasting. Stairs in the museum have at least a single-sided handrail.
- Exhibits are generally well lit.
- Information about exhibits is provided primarily in writing and is visually contrasting.
- An audio guide is available.
- No tours are offered for people with visual impairments and blind people.

Information for guests with cognitive impairments

We have **compiled some information** on accessibility below. Detailed information can be found in the audit report.

- The name or logo of the museum is clearly recognisable from the outside.
- The destinations of the paths are within sight or there are path signs at a constantly visible distance.
- Information about the exhibits is mainly provided in writing, but not in plain language.
- Information on the exhibits is displayed photo realistically.
- Guided tours for people with cognitive impairments are offered on request. Advance booking is necessary.
- Technical information provision: App about the exhibition as multimedia guide, films
- There are no guided tours available for people with cognitive impairments.

Comfort for all generations

We have compiled some **information on accessibility** below. Detailed information can be found in the test report.

- The streetcar stop egapark – line 2 is located 100 m from the main entrance to egapark.
- Parking spaces are available at the egapark parking lot or at the P+R Messe.
- The path from the parking lot to the main egapark entrance is 50 m long. It is easy to walk and drive on and has a maximum longitudinal gradient of 6% over a distance of 6 m.
- The path from the main egapark entrance to the horticultural museum entrance is 1200 m long. It is easy to walk and drive on and has a maximum longitudinal gradient of 6% over a distance of 10 m.
- The destinations of the paths are within sight or there are path signs at a constantly visible distance.
- The name or logo of the museum is clearly visible from the outside.
- The entrance to the museum is visually contrasting.
- The museum is accessible without steps via an exterior elevator.
- The cabin of the outdoor elevator to the foyer of the museum is 110 cm x 140 cm.
- All areas are accessible without steps, via elevators, elevators or stair platform elevators. The elevator car inside the museum is 110 cm x 210 cm. The platform of the lift to the event room is 110 cm x 145 cm. The platform of the stair lifts to the permanent exhibition on the ground floor, from the ground floor to the basement permanent exhibition and to the basement greenhouse is 80 cm x 125 cm.
- An outgoing emergency call in the elevators is acoustically confirmed. Alternatively, stairs are available. Stair treads are not visually contrasting. Stairs in the museum have at least one handrail on one side.
- All doors/passages that can be used by guests and are raised are at least 90 cm wide. There are glass doors without safety markings.
- Elevated and guest usable areas are well lit, i.e., bright and glare-free.
- There is no visually distinct alarm.
- There is no inductive hearing system.
- The exhibits are generally well lit.
- Information about exhibits is conveyed primarily in writing and is high-contrast. Information about the exhibits is partially photo-realistically presented and partially olfactorily perceptible. There is acoustic information about the exhibits.
- Technical options for conveying information: App about the exhibition for cell phones and on loanable tablets
- Signage is designed in legible and high-contrast font.
- Guided tours for people with walking, hearing disabilities are offered. It is necessary to make an appointment in advance. The entire route of the guided tour is step-free. Mobile or fixed seating is available for use during the tour. Guided tours with FM equipment are made possible for people with hearing disabilities (e.g., headphones, neck ring loops, induction loops for hearing aids).
- Aids offered: wheelchair, trolley at the main egapark entrance, EgaExpress with low entrance.

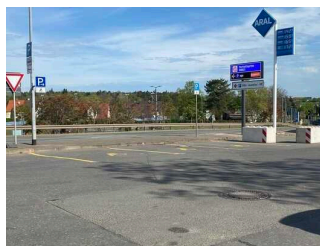
Image Gallery

We have put together some photos from the company / offer for you. You can find more photos in the detailed reports.



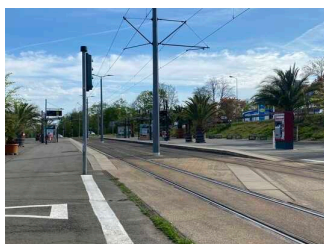
Car park

©René Strobach



Car park

©René Strobach



**Tram stop "EGAPARK"
– line 2**

©René Strobach



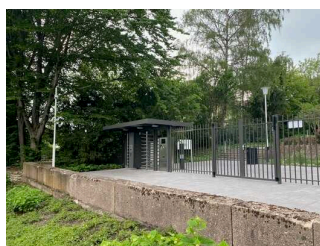
**Main entrance
egapark (barrier-free)**

©René Strobach



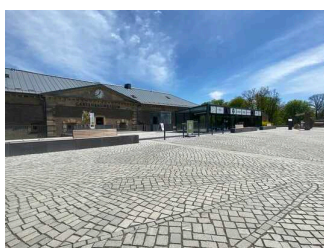
Cash desk (barrier-free)

©René Strobach



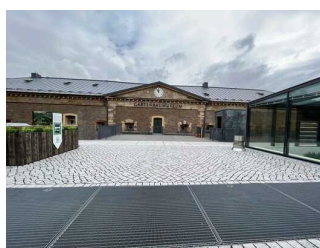
**Entrance egapark
south**

©René Strobach



**Entrance area German
Horticultural Museum**

©René Strobach



**Entrance area German
Horticultural Museum**

©René Strobach



**Entrance area German
Horticultural Museum**

©René Strobach



**Museum ticket office,
public WC, terrace on
the ground floor**

©René Strobach



Museum ticket office, public WC, terrace on the ground floor

©René Strobach



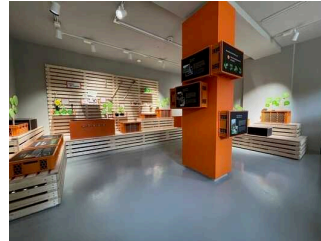
Exhibition rooms Horticultural Museum Mezzanine

©René Strobach



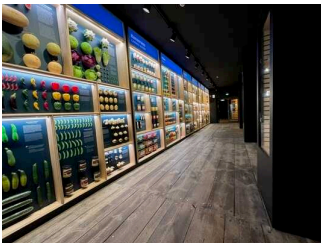
Exhibition rooms Horticultural Museum Mezzanine

©René Strobach



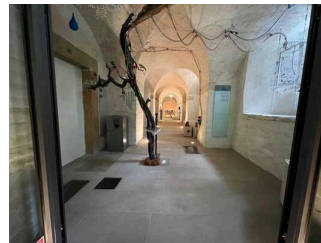
Exhibition rooms on the upper floor

©René Strobach



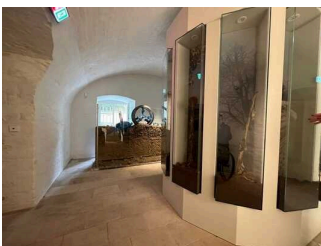
Exhibition rooms on the upper floor

©René Strobach



Exhibition rooms in the basement

©René Strobach



Exhibition rooms in the basement

©René Strobach

Information on the "Tourism for All" labeling system

All establishments and locations certified with the label "Tourism for All" meet the following quality criteria:

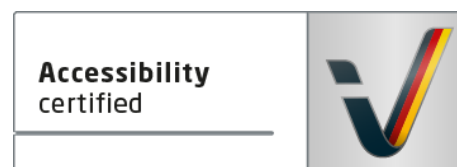
- Data and information on accessibility are collected and checked on site by **external, specially trained evaluators**. The method is not based on self-assessments.
- Data on accessibility is available **in detail** and can be viewed by the guests.
- At least one staff member has successfully passed a **training** on "**Accessibility as a comfort and quality feature**".

The labeling – explanation of the logos and pictograms

The label "**Information about Accessibility**" indicates that detailed and verified information on accessibility is available for all groups of people.



The label "**Accessibility certified**" is based on "Information about Accessibility". It means that the quality criteria defined for specific groups of people are met partially or completely.



The label "**Accessibility certified**" is available in two requirement levels:

"Accessibility certified: partially accessible".

The quality criteria are partially fulfilled for the pictured group of people, i.e. the establishment/location is partially accessible for wheelchair users. The "i" in the pictogram indicates that it is recommended to read again carefully whether the offer meets all (your oder the guest's) individual requirements.



"Accessibility certified: accessible".

The quality criteria are fulfilled for the pictured group of people, i.e. the establishment/location is accessible for wheelchair users.



There are defined quality criteria for **seven groups of people** and a **specific pictogram** for each group.

People with walking disabilities



Wheelchair users



People with hearing impairment



Deaf people



People with visual impairments



Blind people



People with cognitive impairments

