

Short Report



Memorial and educational site Andreasstraße | ©Stiftung Ettersberg

Memorial and educational site Andreasstraße

Andreasstraße 37a
99084 Erfurt

Tel: +49 361 219212-0
Fax: +49 361 219212-20

andreasstrasse@stiftung-ettersberg.de
www.stiftung-ettersberg.de/andreasstrasse

Provider: Stiftung Ettersberg

Jenaer Str. 4
99425 Weimar

Tel: +49 3643 4975-0

weimar@stiftung-ettersberg.de

Welcome!

Just a stone's throw away from Erfurt's Domplatz is the Andreasstraße Memorial and Educational Site. Like no other German place of remembrance, "Andreasstraße" tells the story of repression and revolution: the site is a reminder of the political prisoners who were once locked up here and, at the same time, of the courageous people who dared to occupy a Stasi district administration here for the first time in 1989. Today, Thuringia's most comprehensive exhibition on the SED dictatorship can be seen in the "Andreasstraße" and the Cube of the Peaceful Revolution with its impressive comic facade.

TEST RESULT

for

Gedenk- und Bildungsstätte Andreasstraße

99084 Erfurt, Certificate-ID: PA-02283-2021



This offer was classified according to
the criteria of the nationwide label

»Tourism for All«

and, in the period from

September 2022 – August 2025

is entitled to use the label

»Accessibility checked«

and the associated pictograms

in accordance with the contract.

Overview

- Memorial to the victims of the SED dictatorship and at the same time to the people who dared to occupy a Stasi district administration for the first time in 1989
- Thuringia's most comprehensive exhibition on the SED dictatorship
- Regular events and changing special exhibitions on various topics
- Guided tours with Mediaguide and group tours, public tours Saturday and Sunday 2 pm
- Parking spaces in the parking garage at Domplatz (200 m)
- Streetcar stops "Domplatz Nord" and "Domplatz Süd" – lines 2/3/4/6

Accessibility at a glance

- Parking lot for people with disabilities
- Buildings and facilities accessible without steps
- All rooms and facilities that can be used by guests and are elevated are accessible without steps or via an elevator
- 90 cm minimum width of all passages/doors
- WC for people with disabilities
- Assistance dogs welcome
- Guided tours for people with disabilities

Information for people with walking difficulties and wheelchair users

All areas relevant for testing meet the quality criteria of the label "**Accessibility certified – accessible for people with walking disabilities and for wheelchair users**".

Some **information on accessibility** are listed below. For detailed information please see the evaluation report.

- There are three marked parking space(s) for people with disabilities (parking space size: 350 cm x 500 cm).
- The path from the parking space and station to the entrance is 600 m long. It is easy to walk and drive on and has a maximum longitudinal gradient of 6 % over a distance of 10 m.
- The object is infinitely accessible.
- All evaluated rooms and facilities available to the guests are infinitely accessible via an elevator and an inclined platform lift.
- The platform of the inclined platform lift to the open yard is 250 cm x 250cm.
- The elevator cabin measures 110 cm x 141 cm.
- All evaluated passageways/doors available to the guests are at least 90 cm wide.
- The cash desk is 115 cm high. There is another, equivalent communication possibility while in a sitting position.
- External paths are at least 150 m wide and easy to walk on and drive on and have a maximum longitudinal gradient of up to 6 %.
- There is seating available.
- The exhibits are predominately visible when seated.
- Guided tours for people with walking impairments and wheelchair users are offered. A reservation in advance is necessary.
- The entire route of the guided tour is infinitely variable for wheelchair users.

Public toilet for people with disabilities (basement)

- The toilet door can be opened with key.
- The manoeuvring spaces are:
in front of/behind the door, in front of the toilet and in front of the washbasin at least 150 cm x 150 cm
left of the toilet 83 cm x 70 cm and right of the toilet 100 cm x 70 cm.
- There are grab rails available on the right and left of the toilet. The grab rails can be flipped-up.
- The sink is wheelchair compatible.
- The mirror can be seen while standing or sitting.
- An alarm trigger (cord) is available.

Information for people with hearing impairments and deaf people

Some **information on accessibility** are listed below. For detailed information please see the evaluation report.

- There is no clearly visible alarm.
- There is no audio induction loop system.
- An outgoing emergency call in the elevator is confirmed audibly.
- Alternatively stairs are available.
- The information on the exhibits provided in writing.
- There is audible information on the exhibits.
- Guided tours are offered for people with hearing impairment, but not for deaf people.

Information for visually impaired and blind people

Some **information on accessibility** are listed below. For detailed information please see the evaluation report.

- Assistance dogs are allowed in relevant areas/rooms
- The entrance is not visually rich in contrast and recognizable by a tactile change of floor covering.
- Almost all evaluated and usable areas for the guest are well illuminated, i.e. bright and glare-free.
- The signage is designed in clearly legible and contrasting font.
- There are no obstacles, e.g. objects protruding into the path/room.
- An outgoing emergency call in the elevator is confirmed audibly. The break position is not announced by spoken commands. The operating controls are visually rich in contrast and tactilely detectable.
- Alternatively stairs are available.
- Steps are not visually rich in contrast. Stairs have on both sides..
- The exhibits are usually well illuminated.
- The information on the exhibits is provided in writing and is visually rich in contrast.
- Guided tours are offered for people with visual impairments and for blind people.
- An audio guide is available which can be operated independently by people with visual impairments / blind people.
- Information is not available in Braille or prismatic font.

Information for guests with cognitive impairments

Some **information on accessibility** are listed below. For detailed information please see the evaluation report.

- The name or logo of the establishment/facility is clearly recognizable from the outside.
- Signs in visible distance are available.
- There is no colored or pictorial guidance system available.
- The information on the exhibits is predominately provided in writing, but not in easy language.
- There are no guided tours available for people with cognitive impairments.

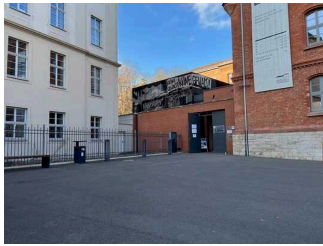
Comfort for all generations

We have compiled some **information on accessibility** below. Detailed information can be found in the test report.

- Parking is available in the parking garage at the cathedral, approx. 200 m away.
- The Domplatz streetcar stop (line 2 / 3 / 6) is 100 m away.
- The path from the streetcar and from the parking lot to the entrance is easy to walk and drive on and has a maximum longitudinal slope of 6% over a distance of 10 meters.
- The entrance is visually contrasting.
- The name or logo of the business is clearly recognizable from the outside.
- The facility is accessible without steps.
- All rooms and facilities that can be used and raised for the guest are accessible without steps or via an elevator.
- All doors/passages that can be used and raised for the guest are at least 90 cm wide.
- Almost all elevated and guest usable areas are well lit, i.e. bright and glare-free.
- There is no visually distinct alarm.
- There is no inductive hearing system.
- An outgoing emergency call in the elevator is confirmed acoustically. Alternatively, there are stairs. Stair treads are not visually contrasting. Stairs have handrails on both sides.
- Exhibits are generally well lit. Exhibit information is provided in writing and acoustically. Signage is designed in legible, high-contrast lettering.
- Public restroom available.
- Guided tours are available for people with walking, hearing, and visual disabilities. The entire guided tour route is step-free. Advance booking is required.

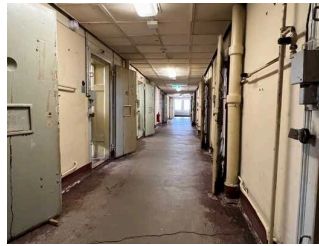
Image Gallery

We have put together some photos from the company / offer for you. You can find more photos in the detailed reports.



Entrance area of the memorial

©René Strobach



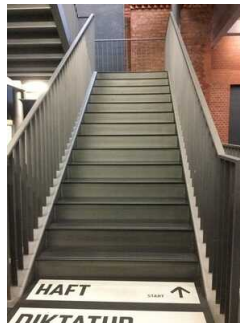
Exhibition "HAFT"

©René Strobach



View into the elevator

©René Strobach



Main staircase

©René Strobach



Special exhibition

©René Strobach



Exhibition "Revolution"

©René Strobach



Toilet

©René Strobach



Multimedia guides
(can also be used as a mobile audio loop)

©René Strobach

Information on the "Tourism for All" labeling system

All establishments and locations certified with the label "Tourism for All" meet the following quality criteria:

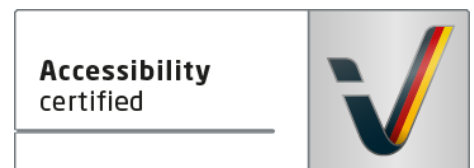
- Data and information on accessibility are collected and checked on site by **external, specially trained evaluators**. The method is not based on self-assessments.
- Data on accessibility is available **in detail** and can be viewed by the guests.
- At least one staff member has successfully passed a **training** on "**Accessibility as a comfort and quality feature**".

The labeling – explanation of the logos and pictograms

The label "**Information about Accessibility**" indicates that detailed and verified information on accessibility is available for all groups of people.



The label "**Accessibility certified**" is based on "Information about Accessibility". It means that the quality criteria defined for specific groups of people are met partially or completely.



The label "**Accessibility certified**" is available in two requirement levels:

"Accessibility certified: partially accessible".

The quality criteria are partially fulfilled for the pictured group of people, i.e. the establishment/location is partially accessible for wheelchair users. The "i" in the pictogram indicates that it is recommended to read again carefully whether the offer meets all (your oder the guest's) individual requirements.



"Accessibility certified: accessible".

The quality criteria are fulfilled for the pictured group of people, i.e. the establishment/location is accessible for wheelchair users.



There are defined quality criteria for **seven groups of people** and a **specific pictogram** for each group.

People with walking disabilities



Wheelchair users



People with hearing impairment



Deaf people



People with visual impairments



Blind people



People with cognitive impairments

