

Short Report



The former administration building of J. A. Topf & Sons is now a place of learning for humanity, respect and tolerance. | ©Kastner Pichler Architekten, 2011

Topf und Söhne Memorial

Sorbenweg 7
99099 Erfurt

Tel: +49 361 655 16 81

topfundsoehne@erfurt.de
www.topfundsoehne.de

Provider: Landeshauptstadt Erfurt | Stadtverwaltung | Kulturdirektion | Geschichtsmuseen

99111 Erfurt

Tel: +49 361 655-0

stadtverwaltung@erfurt.de

Welcome!

The former headquarters of J.A. Topf & Sons is a historical site of industry's complicity in the Holocaust. The company provided the SS with powerful ovens for the disposal of corpses in the concentration camps and did not hesitate to supply technical solutions to "optimize" the killing in the Auschwitz-Birkenau extermination camp. With a permanent exhibition on the company's complicity in the Shoah and temporary exhibitions, the Place of Remembrance offers a variety of opportunities for historically informed reflection on the dangers of right-wing extremism, anti-Semitism and racism today and the personal responsibility of individual for fellow humanity and democracy.

TEST RESULT

for

Erinnerungsort Topf & Söhne – Die Ofenbauer von Auschwitz

99099 Erfurt, Certificate-ID: PA-12254-2021



This offer was classified according to
the criteria of the nationwide label

»Tourism for All«

and, in the period from

October 2022 – September 2025

is entitled to use the label

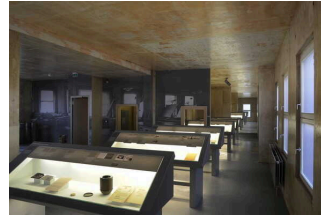
»Accessibility checked«

and the associated pictograms
in accordance with the contract.



Historical drawing machines from J. A. Topf & Sons are part of the permanent exhibition.

©Kastner Pichler
Architekten, 2011



Key documents from international archives on the Shoah prove the gas murder in Auschwitz.

©Boris Hajdukovic, 2011

Overview

- Former headquarters of J.A. Topf & Sons and authentic site of the industry's complicity in the Holocaust.
- Today a place of remembrance with a permanent exhibition on the company's history and temporary exhibitions
- Public guided tours every last Sunday of the month
- Parking facilities available
- Bus stop "Spielbergtor" – line 9

Accessibility at a glance

- Parking space for people with disabilities
- Building accessible without steps
- All rooms and facilities that can be used and raised for the guest are accessible without steps or via an elevator
- 90 cm minimum width of almost all passages/doors
- WC for people with disabilities
- Assistance dogs welcome

Information for people with walking difficulties and wheelchair users

All areas relevant for testing meet the quality criteria of the label "**Accessibility certified – accessible for people with walking disabilities**".

Some **information on accessibility** are listed below. For detailed information please see the evaluation report.

- There is a marked parking lot for people with disabilities (parking space size: 440 cm x 500 cm).
- The bus stop "Spielbergtor" (line 9) is 500 m away.
- The path from the parking lot to the side entrance is 50 m long. It is easy to walk and drive on and has a maximum longitudinal gradient of 2%.
- The building is accessible without steps at the side entrance via a ramp.
- The ramp has a slope of 6 % and a total length of 15 m.
- All other rooms and facilities that can be used and raised for the guest are accessible without steps or via an elevator. Part of the exhibition room (3rd floor) is slightly elevated, there is a mobile ramp available.
- The elevator car is 110 cm x 130 cm.
- All doors/passages that can be used by guests and are raised are at least 80 cm wide.
- The ticket counter is 95 cm high.
- Exhibits and exhibit information are predominantly visible while seated.
- Guided tours are available for people with walking disabilities and wheelchair users. Advance reservation is required.
- Mobile or fixed seating is available for people with walking disabilities to use during the tour.
- The entire route of the guided tour is step-free for wheelchair users.

Public toilet for people with disabilities

- The manoeuvring spaces are:
in front of the sink 150 cm x 145 cm; in front of the WC 145 cm x 150 cm;
to the left of the WC 82 cm x 71 cm; to the right of the WC 88 cm x 71 cm.
- There are grab rails to the left and right of the WC. The grab rails can be flipped-up.
- The washbasin is wheelchair compatible.
- The mirror can be viewed while standing or sitting.
- There is an alarm trigger.

Information for people with hearing impairments and deaf people

Some **information on accessibility** are listed below. For detailed information please see the evaluation report.

- There is no clearly visible alarm.
- There is no audio induction loop system at the counter.
- An outgoing emergency call in the elevator is confirmed acoustically. Alternatively, stairs are available.
- Information about the exhibits is provided in writing.
- Guided tours for deaf people (in German sign language) are available upon request.

Information for visually impaired and blind people

Some **information on accessibility** are listed below. For detailed information please see the evaluation report.

- Assistance dogs may be brought into all relevant areas/rooms.
- The entrance is visually contrasting.
- There are glass doors without security markings.
- All elevated areas that can be used by guests are well lit, i.e. bright and glare-free.
- An outgoing emergency call in the elevator is acoustically confirmed.
- Stair treads are not visually contrasting. Stairs have at least one handrail on one side.
- Exhibits are generally well lit.
- Exhibit information is conveyed in writing and is visually contrasting.
- Information is not available in Braille or prismatic writing.
- Guided tours are available for people with visual impairments and blind people. Advance reservations are required.

Information for guests with cognitive impairments

Some **information on accessibility** are listed below. For detailed information please see the evaluation report.

- The name or logo of the museum are clearly recognizable from the outside.
- The destinations of the paths are within sight. There are also wayfinding signs at visible intervals.
- Information about exhibits is provided in writing, but not in plain language.
- Guided tours are available for people with cognitive impairments. Advance registration is required.
- The guided tour for people with cognitive impairments is given in plain language.

Comfort for all generations

We have compiled some **information on accessibility** below. Detailed information can be found in the test report.

- Parking spaces available.
- The bus stop "Spielbergtor" (line 9) is 500 m away.
- The path from the parking lot to the side entrance is 50 m long. It is easy to walk and drive on and has a maximum longitudinal slope of 2%.
- The name or logo of the museum is clearly recognizable from the outside.
- The entrance is visually contrasting.
- The building is accessible without steps at the side entrance via a ramp. The ramp has a slope of 6 % and a total length of 15 m.
- All other usable and elevated rooms and facilities for the guest are accessible without steps or via an elevator. Part of the exhibition room (3rd floor) is slightly elevated, there is a mobile ramp available.
- All doors/passages that can be used by guests and are raised are at least 80 cm wide. There are glass doors without safety markings.
- All raised and usable areas for the guest are well lit, i.e. bright and glare-free.
- There is an inductive hearing system.
- An outgoing emergency call in the elevator is confirmed acoustically. Alternatively, stairs are available. Stair treads are not visually contrasting. Stairs have at least one handrail on one side.
- Exhibits are generally well lit. Exhibit information is provided in writing and is visually contrasting.
- Guided tours are provided for people with walking and visual disabilities. Mobile or fixed seating is available for use during the tour. The entire tour route is step-free. Advance reservation is required.

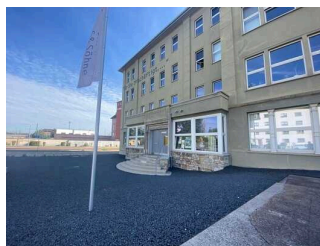
Image Gallery

We have put together some photos from the company / offer for you. You can find more photos in the detailed reports.



Parking

©René Strobach



Entrance

©René Strobach



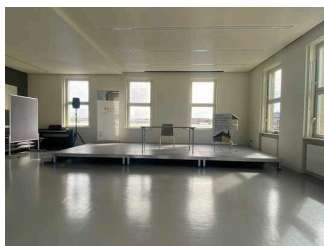
Cash desk / Ticket counter

©René Strobach



Showrooms

©René Strobach



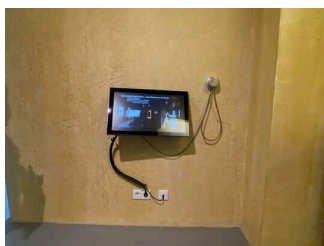
Event room

©René Strobach



Public toilet

©René Strobach



Multimedia board

©René Strobach

Information on the "Tourism for All" labeling system

All establishments and locations certified with the label "Tourism for All" meet the following quality criteria:

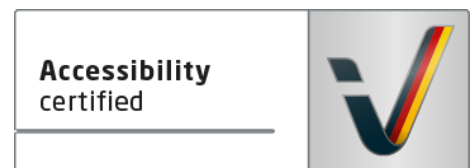
- Data and information on accessibility are collected and checked on site by **external, specially trained evaluators**. The method is not based on self-assessments.
- Data on accessibility is available **in detail** and can be viewed by the guests.
- At least one staff member has successfully passed a **training** on "**Accessibility as a comfort and quality feature**".

The labeling – explanation of the logos and pictograms

The label "**Information about Accessibility**" indicates that detailed and verified information on accessibility is available for all groups of people.



The label "**Accessibility certified**" is based on "Information about Accessibility". It means that the quality criteria defined for specific groups of people are met partially or completely.



The label "**Accessibility certified**" is available in two requirement levels:

"Accessibility certified: partially accessible".

The quality criteria are partially fulfilled for the pictured group of people, i.e. the establishment/location is partially accessible for wheelchair users. The "i" in the pictogram indicates that it is recommended to read again carefully whether the offer meets all (your oder the guest's) individual requirements.



"Accessibility certified: accessible".

The quality criteria are fulfilled for the pictured group of people, i.e. the establishment/location is accessible for wheelchair users.



There are defined quality criteria for **seven groups of people** and a **specific pictogram** for each group.

People with walking disabilities



Wheelchair users



People with hearing impairment



Deaf people



People with visual impairments



Blind people



People with cognitive impairments

